

bradscholars

Isotope analysis of incremental human dentine: towards higher temporal resolution

Item Type	Article
Authors	Beaumont, Julia;Gledhill, Andrew R.;Montgomery, Janet
Citation	Beaumont J, Gledhill AR and Montgomery J (2014) Isotope analysis of incremental human dentine: towards higher temporal resolution. Bulletin of the International Association for Paleodontology. 8(2): 212-223.
Rights	(c) 2014 The Authors. This is an Open Access article distributed under the Creative Commons CC-BY-NC-ND license (https://creativecommons.org/licenses/by-nc-nd/3.0/)
Download date	2025-04-18 06:51:22
Link to Item	http://hdl.handle.net/10454/10424



The University of Bradford Institutional Repository

<http://bradscholars.brad.ac.uk>

This work is made available online in accordance with publisher policies. Please refer to the repository record for this item and our Policy Document available from the repository home page for further information.

To see the final version of this work please visit the publisher's website. Access to the published online version may require a subscription.

Link to publisher version: <http://hrcak.srce.hr/file/193316>

Citation: Beaumont J, Gledhill AR and Montgomery JA (2014) Isotope analysis of incremental human dentine: towards higher temporal resolution. *Bulletin of the International Association for Paleodontology*. 8(2): 212-223.

Copyright statement: © 2014 The Authors. This is an Open Access article distributed under the [Creative Commons CC-BY-NC-ND license](#).

Isotope analysis of incremental human dentine: towards higher temporal resolution

• Julia Beaumont (1), Andy Gledhill (1) and Janet Montgomery (2) •

1) School of Archaeological Sciences, University of Bradford, UK.

2) Department of Archaeology, Durham University

Address for correspondence:

School of Archaeological Sciences

University of Bradford

Bradford UK

BD7 1DP

Email: j.beaumont6@bradford.ac.uk

Bull Int Assoc Paleodont. 2014;8(2):212-223.

Abstract

Here we present a novel method which allows the measurement of the stable isotope ratios of carbon ($\delta^{13}\text{C}$) and nitrogen ($\delta^{15}\text{N}$) from much smaller samples of dentine than previously possible without affecting the quality parameters. The reconstruction of the diet of past populations using isotopic analysis of bone collagen is a well-established tool. However, because of remodelling of bone throughout life, this gives a blurred picture of the diet. The analysis of $\delta^{13}\text{C}$ and $\delta^{15}\text{N}$ from tiny increments of dentine utilizes tissue that does not remodel and permits comparison, at the same age, of those who survived infancy with those who did not at high temporal resolution. This new method has been tested on archaeological teeth from two sites: three molar teeth from the 19th Century Kilkenny Union Workhouse Famine cemetery, Ireland; and three from the Anglian (5-7th centuries AD) cemetery at West Heslerton, Yorkshire, England, selected on the basis of their varied preservation. The methods of incremental dentine sectioning described in Beaumont et al (2013)[1] were carried out and a sub-section removed prior to denaturing and lyophilisation. The two sample sets, dentine and collagen from each section, were measured by isotope ratio mass spectrometry. The profiles produced from each of the six teeth studied show close correlation in isotope ratios indicating that demineralized dentine which has not been denatured and lyophilised produces isotope ratios comparable with dentine collagen. This finding allows analysis of extremely small samples of dentine which could previously not be measured using current instruments and methods.

Keywords: Stable isotopes; Palaeodiet; Lyophilization; Microsampling

Introduction

Dietary reconstruction of the diet by measuring the stable isotopes of carbon ($\delta^{13}\text{C}$) and nitrogen ($\delta^{15}\text{N}$) in human body tissues is a well-accepted part of both modern and archaeological investigations of human behaviour and health. For example, measurements of $\delta^{15}\text{N}$ in modern human hair have been used to investigate anorexia and severe morning sickness [2, 3] and from archaeological bone and dentine to show changes in diet within a population which can be related to behaviour [4-7]. Early paleodietary studies used collagen extracted from bulk samples of bone and dentine, which gives an average value for the isotopes incorporated during the growth period of the tissue [8, 9]. In teeth, this will represent the period of years during childhood or adolescence, and from bone will reflect up to the last 10 years of life depending on the age of the individual and the element sampled [10].

Recently, due to improvements in instrumentation, researchers have been able to measure smaller samples, and this has allowed the analysis of incrementally-forming tissues such as primary dentine which form and mineralize at a regular rate and do not remodel [11] thus recording the isotopic values from the diet during the period of formation. Small samples taken at intervals which can be related to the age at which a tooth formed have allowed the examination of dietary changes during growth with high temporal resolution [1, 12-17]. However, there are still limits on the size of the samples. One of the limiting factors is the amount of dentine collagen which can be produced by the methods which were established using bone samples, as some of the yield is lost during the processing. Because of the complex, appositional nature of dentine formation, even these sampling strategies have resulted in each increment representing an average of a period of time [11].

In order to improve the yield, thus reducing the size of sample and improving temporal resolution, new methods have been developed. These include the punching out of discs of dentine which have formed before the neo-natal line in deciduous teeth for measurement [18], although the authors found that the quality parameters suffered as a result of the sample size, and the processing of collagen with centrifugation to move contaminants to the bottom of the microtube rather than filtration [1].

Because the latter method necessarily means that the dentine and any contaminants not removed by the centrifugation remain in the sample, and the collagen sample produced was often large enough to provide several duplicates, it was reasoned that demineralised dentine may be measurable by isotope mass spectrometry without being denatured. This study investigates whether this is feasible and if the measurements can be relied upon, even in cases where the dentine preservation is poor.

Materials and Methods

The samples were taken from three permanent second molar teeth (M2) from individuals from the mid-19th-century Kilkenny Union Workhouse (prefix KUW) Famine cemetery, Ireland, and from three permanent molar teeth, an M1, M2 and M3 from individuals from the Early Anglo-Saxon Period (5-7th centuries AD) cemetery of West Heslerton, Yorkshire, England (prefix HP) [19, 20] (Table 1). The KUW teeth were very well-preserved, macroscopically resembling modern, extracted, un-buried teeth (dentine graded as 1 following Montgomery 2002, 121)[21]. The teeth from West Heslerton were chosen to represent the range of tooth preservation found at the site where burials were made on chalk, in ditches and in free-draining sands. The three teeth selected were graded for dentine preservation as 3 (M1 preservation good), 4 (M2 preservation satisfactory) and 5 (M3 preservation poor) [21](see Table 1 and Figure 1).

A single root was removed from each of the permanent human molar teeth sampled. Five of the teeth were cleaned, demineralized and then sectioned using method 2 in Beaumont et al. (2013)[1] to produce 1mm sections. Because of poor preservation, the third molar from West Heslerton was embedded in plaster and sectioned into 2mm sections using method 1 from Beaumont et al. (2013)[1]. Each root section then had a wedge of demineralized dentine removed using a scalpel, thus including a representative portion of the thickness of the main sample and the same averaging of the time of growth of the section (Figure 2). The larger part of the section was denatured by heating at 70°C for 24 hours, centrifuged, frozen and then freeze-dried. 0.5 mg samples were weighed into tin capsules and measured in duplicate. The dentine wedges were weighed, freeze-dried and re-weighed into tin capsules prior to measurement. For some sections there was insufficient tissue to take a wedge and achieve sufficient collagen: these were denatured, lyophilised and measured in order to see the complete trend in the dentine isotopic profile. All samples were measured by combustion in a Thermo Flash EA 1112 and introduction of separated N₂ and CO₂ to a Finnigan Delta plus XL via a Conflo III interface at the Stable Isotope Laboratory at the School of Archaeological Sciences, University of Bradford. The instrument was calibrated using both laboratory and international standards: the analytical error at 1 standard deviation was ±0.2‰ or better.

The results have been compared visually using graphs showing changes in the dentine $\delta^{13}\text{C}$ and $\delta^{15}\text{N}$ profiles over the approximate age of the individual, and in terms of the range of variation between the values of the collagen and dentine samples.

Results

Table 2 shows the results for each dentine section, with the $\delta^{13}\text{C}$ and $\delta^{15}\text{N}$ and the C:N ratio reported for each sample of dentine and collagen. The sectioning process commences with sample number 1 with the earliest forming dentine at the enamel dentine junction in the cusp of the tooth

and is numbered consecutively to the apex of the root. The C:N ratios were within the range accepted by van Klinken [22] as being representative of collagen (reference) and the yield for the collagen was always higher than 1.2% recommended by Ambrose [23] because no filtration was carried out. The demineralised dentine samples lost approximately 50% of their mass during freeze-drying.

It can be seen from the profiles for all 6 teeth (Figure 3) that the $\delta^{13}\text{C}$ and $\delta^{15}\text{N}$ values for the collagen and dentine from each section are extremely well-correlated, and most are within the reported 1 SD error for the instrument. The largest difference was found for $\delta^{15}\text{N}$ (3‰) in section 2 of sample HP2BA897 the M1tooth from West Heslerton for which the dentine was graded as 3.

Discussion

The profiles produced from both sample sets resemble those seen in other studies such as Eerkens et al., Beaumont et al. and Sandberg et al. [1, 13, 17] in terms of the patterns of variation seen in both $\delta^{13}\text{C}$ and $\delta^{15}\text{N}$ over the growth period of the tooth, all of which used denatured and lyophilised collagen. The close matching of the values measured in the treated and untreated samples from the same sections in this study across a range of dates and dentine preservation states suggests that it would be possible to achieve reliable results from smaller samples of dentine, thus paving the way for improving temporal resolution. It may now be possible to micro-sample based on the incremental developmental lines visible by microscopy within the dentine and achieve more accurate age estimation for the isotopic information gleaned.

Conclusion

The ability to achieve reliable isotopic values from the measurement of smaller samples of human dentine will allow researchers to achieve a temporal resolution for dietary reconstruction which is comparable to that of incremental hair samples, i.e. 2-3 months, and may pave the way to resolve short-term and seasonal variations which were previously lost due to the averaging of the signal. More research is necessary to improve the method, particularly in terms of sampling in the direction of growth rather than across the incremental layers.

Acknowledgements

Thank you to Jonny Geber and the Museum of Ireland for permission to sample the teeth from the Kilkenny Union Workhouse. We are grateful to Dominic Powlesland for providing the teeth from the

West Heslerton cemetery. Grateful thanks to Jacqueline Towers, University of Bradford for her support in this project..

References

1. Beaumont J, Gledhill A, Lee-Thorp J, and Montgomery J. 2013. Childhood diet: a closer examination of the evidence from dental tissues using stable isotope analysis of incremental human dentine. *Archaeometry* 55(2):277-295.
2. Fuller BT, Fuller JL, Sage NE, Harris DA, O'Connell TC, and Hedges REM. 2005. Nitrogen balance and $\delta^{15}\text{N}$: why you're not what you eat during nutritional stress. *Rapid Comm Mass Spectrom* 19(18):2497-2506.
3. Hatch KA, Crawford MA, Kunz AW, Thomsen SR, Eggett DL, Nelson ST, and Roeder BL. 2006. An objective means of diagnosing anorexia nervosa and bulimia nervosa using $^{15}\text{N}/^{14}\text{N}$ and $^{13}\text{C}/^{12}\text{C}$ ratios in hair. *Rapid Comm Mass Spectrom* 20:3367-3373.
4. Larsen CS. 1990. *The Archaeology of Mission Santa Catalina de Guale: 2. Biocultural Interpretations of a Population in Transition*. New York: American Museum of Natural History. p150.
5. Mays S, Richards MP, and Fuller BT. 2002. Bone stable isotope evidence for infant feeding in Mediaeval England. *Antiquity* 76:654-658.
6. Haydock H, Clarke L, Craig-Atkins E, Howcroft R, and Buckberry J. 2013. Weaning at Anglo-Saxon Raunds: Implications for Changing Breastfeeding Practice in Britain Over Two Millennia. *Am J Phys Anth* 151:604-612.
7. Jay M, Fuller BT, Richards MP, Knüsel CJ, and King SS. 2008. Iron Age Breastfeeding Practices in Britain: Isotopic Evidence From Wetwang Slack, East Yorkshire. *Am J Phys Anth* (136):327-337.
8. Hedges REM, Clement JG, Thomas DL, and O'Connell TC. 2007. Collagen Turnover in the Adult Femoral Mid-Shaft: Modeled From Anthropogenic Radiocarbon Tracer Measurements. *Am J Phys Anth* 133:808-816.
9. Müldner G, Chenery C, and Eckardt H. 2011. The "Headless Romans": multi-isotope investigations of an unusual burial ground from Roman Britain. *J Arc Sci* 38(2):280-290.
10. Sealy J, Armstrong R, and Schrire C. 1995. Beyond Lifetime Averages: Tracing Life Histories Through Isotopic Analysis of Different Calcified Tissues from Archaeological Human Skeletons. *Antiquity* 69:290-300.
11. Dean MC, and Scandrett AE. 1995. Rates of Dentine Mineralization in Permanent Human Teeth. *I J Osteoarc* 5:349-358.
12. Eerkens JW, and Bartelink EJ. 2013. Sex-biased weaning and early childhood diet among middle holocene hunter-gatherers in Central California. *American J Phys Anth* 152(4):471-483.
13. Eerkens JW, Berget AG, and Bartelink EJ. 2011. Estimating weaning and early childhood diet from serial micro-samples of dentin collagen. *J Arc Sci* 38(11):3101-3111.
14. Fuller BT, Richards M, and Mays SA. 2003. Stable Carbon and Nitrogen Isotope Variations in Tooth Dentine Serial Sections from Wharram Percy. *J Arc Sci* 30:1673-1684.
15. Montgomery J, Beaumont J, Jay M, Keefe K, Gledhill AR, Cook GT, Dockrill SJ, and Melton ND. 2013. Strategic and sporadic marine consumption at the onset of the Neolithic: increasing temporal resolution in the isotope evidence. *Antiquity* 87(338):1060-1072.
16. Henderson RC, Lee-Thorp J, and Loe L. 2014. Early life histories of the London poor using $\delta^{13}\text{C}$ and $\delta^{15}\text{N}$ stable isotope incremental dentine sampling. *Am J Phys Anth* 154(4):585-593.
17. Sandberg PA, Sponheimer M, Lee-Thorp J, and Van Gerven D. 2014. Intra-Tooth Stable Isotope Analysis of Dentine: A Step Toward Addressing Selective Mortality in the Reconstruction of Life History in the Archaeological Record. *Am J Phys Anth* 155:281-293.
18. Burt NM, and Garvie-Lok S. 2013. A new method of dentine microsampling of deciduous teeth for stable isotope ratio analysis. *J Arc Sci* 40(11):3854-3864.
19. Houghton C, and Powlesland D. 1999. *West Heslerton: the Anglian cemetery. The excavation and discussion of the evidence*. Yedingham, North Yorkshire: Landscape Research Centre, Ltd.
20. Houghton C, and Powlesland D. 1999. *West Heslerton: the Anglian cemetery. Catalogue of the Anglian graves and associated assemblages*. Yedingham, North Yorkshire: Landscape Research Centre, Ltd.
21. Montgomery J. 2002. Lead and strontium isotope compositions of human dental tissues as an indicator of ancient exposure and population dynamics. Unpublished PhD thesis University of Bradford, UK.
22. van Klinken GJ. 1999. Bone Collagen Quality Indicators for Palaeodietary and Radiocarbon Measurements. *J Arc Sci* 26(6):687-695.

23. Ambrose SH, and Norr L. 1993. Experimental evidence for the relationship of the carbon isotope ratios of whole diet and dietary protein to those of bone collagen and carbonate. In: Lambert JB, and G.Grupe, editors. Prehistoric human bone: archaeology at the molecular level. Berlin: Springer-Verlag. p 1-37.



Figure 1. Molar teeth from West Heslerton, from the left HP2BA897 (M1), HP2BA503 (M2), HP2BA903 (M3) showing the range of macroscopic preservation of the dentine. Image: J Beaumont. See Table 1 for details.

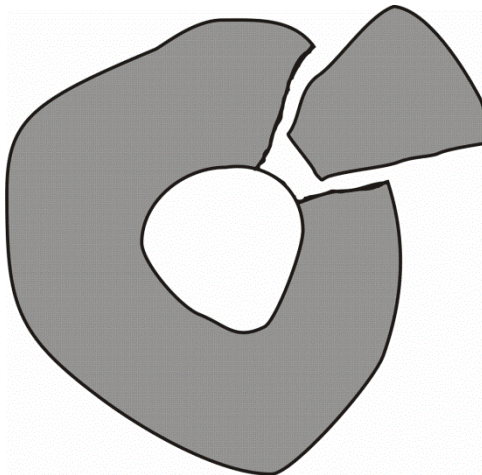


Figure 2. Diagram showing wedge of tissue removed from each demineralized horizontal section of root.

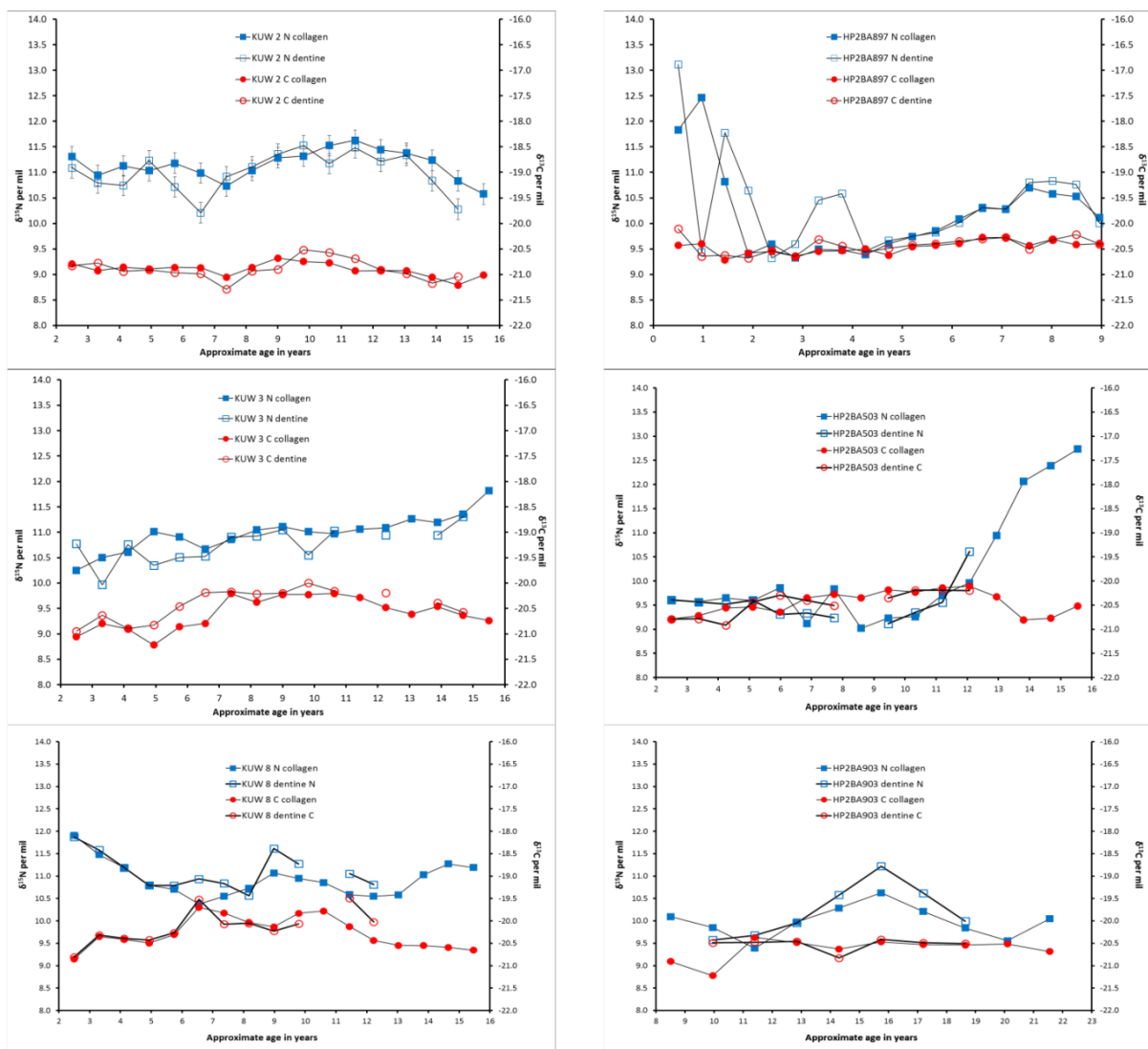


Figure 3. Plots of $\delta^{13}C$ and $\delta^{15}N$ profiles against approximate age for molar teeth from Kilkenny Union Workhouse and West Heslerton.

Sample number	Site	Tooth type	Dentine preservation score	Description
KUW 2	Kilkenny Union Workhouse	M2	1	Visually indistinguishable from modern
KUW 3	Kilkenny Union Workhouse	M2	1	Visually indistinguishable from modern
KUW 8	Kilkenny Union Workhouse	M2	1	Visually indistinguishable from modern
HP2BA897	West Heslerton	M1	3	Preservation good -
HP2BA503	West Heslerton	M2	4	Preservation satisfactory -
HP2BA903	West Heslerton	M3	5	Preservation poor -

Table 1 Tooth samples and dentine preservation scores (after Montgomery 2002, 121[21])

Sample number	$\delta^{15}\text{N}\text{‰}$	$\delta^{13}\text{C}\text{‰}$	C:N		differences $\delta^{15}\text{N}\text{‰}$	differences $\delta^{13}\text{C}\text{‰}$
KUW 2 1	11.3	-20.8	3.2		0.2	0.0
KUW 2 2	10.9	-20.9	3.3		0.2	-0.2
KUW 2 3	10.9	-21.0	3.2		0.2	0.0
KUW 2 4	11.0	-20.9	3.2		-0.2	0.0
KUW 2 5	11.2	-20.9	3.3		0.5	0.1
KUW 2 6	11.0	-20.9	3.3		0.8	0.1
KUW 2 7	10.7	-21.1	3.3		-0.2	0.2
KUW 2 8	11.0	-20.9	3.3		-0.1	0.1
KUW 2 9	11.3	-20.7	3.3		-0.1	0.2
KUW 2 10	11.3	-20.7	3.3		-0.2	-0.2
KUW 2 11	11.6	-20.9	3.3		0.5	-0.4
KUW 2 12	11.6	-20.9	3.3		0.1	-0.2
KUW 2 13	11.4	-20.9	3.3		0.2	0.0
KUW 2 14	11.4	-20.9	3.3		0.0	0.1
KUW 2 15	11.2	-21.1	3.3		0.4	0.1
KUW 2 16	10.8	-21.2	3.3		0.6	-0.2
KUW 2 17	10.6	-21.0	3.3			
KUW 2 1 dentine	11.1	-20.8	3.2			
KUW 2 2 dentine	10.8	-20.8	3.2			
KUW 2 3 dentine	10.7	-20.9	3.2			
KUW 2 4 dentine	11.2	-20.9	3.3			
KUW 2 5 dentine	10.7	-21.0	3.3			
KUW 2 6 dentine	10.2	-21.0	3.3			
KUW 2 7 dentine	10.9	-21.3	3.4			
KUW 2 8 dentine	11.1	-20.9	3.2			
KUW 2 9 dentine	11.4	-20.9	3.3			
KUW 2 10 dentine	11.5	-20.5	3.3			
KUW 2 11 dentine	11.2	-20.6	3.4			
KUW 2 12 dentine	11.5	-20.7	3.3			
KUW 2 13 dentine	11.2	-20.9	3.3			
KUW 2 14 dentine	11.3	-21.0	3.3			
KUW 2 15 dentine	10.8	-21.2	3.4			
KUW 2 16 dentine	10.3	-21.0	3.4			
KUW 3 1	10.2	-21.1	3.3		-0.5	-0.1
KUW 3 2	10.5	-20.8	3.2		0.5	-0.2
KUW 3 3	10.6	-20.9	3.2		-0.2	0.0
KUW 3 4	11.0	-21.2	3.2		0.7	-0.4
KUW 3 5	10.9	-20.9	3.2		0.4	-0.4
KUW 3 6	10.7	-20.8	3.2		0.1	-0.6
KUW 3 7	10.9	-20.2	3.2		0.0	0.0

Sample number	$\delta^{15}\text{N}\text{‰}$	$\delta^{13}\text{C}\text{‰}$	C:N		differences $\delta^{15}\text{N}\text{‰}$	differences $\delta^{13}\text{C}\text{‰}$
KUW 3 8	11.0	-20.4	3.3		0.1	-0.2
KUW 3 9	11.1	-20.2	3.2		0.1	0.0
KUW 3 10	11.0	-20.2	3.3		0.5	-0.2
KUW 3 11	11.0	-20.2	3.2		-0.1	0.0
KUW 3 12	12.7	-17.9	3.1			
KUW 3 13	11.1	-20.5	3.3		0.1	-0.3
KUW 3 14	11.3	-20.6	3.3			
KUW 3 15	11.2	-20.5	3.3		0.3	-0.1
KUW 3 16	11.4	-20.6	3.3		0.1	-0.1
KUW 3 17	11.8	-20.7	3.4			
KUW 3 1 dentine	10.8	-21.0	3.3			
KUW 3 2 dentine	10.0	-20.6	3.3			
KUW 3 3 dentine	10.8	-20.9	3.3			
KUW 3 4 dentine	10.3	-20.8	3.3			
KUW 3 5 dentine	10.5	-20.5	3.3			
KUW 3 6 dentine	10.5	-20.2	3.3			
KUW 3 7 dentine	10.9	-20.2	3.3			
KUW 3 8 dentine	10.9	-20.2	3.3			
KUW 3 9 dentine	11.0	-20.2	3.3			
KUW 3 10 dentine	10.6	-20.0	3.3			
KUW 3 11 dentine	11.0	-20.2	3.3			
KUW 3 12 dentine						
KUW 3 13 dentine	10.9	-20.2	3.4			
KUW 3 14 dentine						
KUW 3 15 dentine	10.9	-20.4	3.4			
KUW 2 16 dentine	11.3	-20.6	3.4			
KUW 8 1	11.9	-20.8	3.3		0.0	0.0
KUW 8 2	11.5	-20.4	3.2		-0.1	0.0
KUW 8 3	11.2	-20.4	3.2		0.0	0.0
KUW 8 4	10.8	-20.5	3.2		0.0	-0.1
KUW 8 5	10.7	-20.3	3.2		-0.1	0.0
KUW 8 6	10.4	-19.7	3.2		-0.6	-0.2
KUW 8 7	10.5	-19.8	3.2		-0.3	0.2
KUW 8 8	10.7	-20.0	3.2		0.2	0.0
KUW 8 9	11.1	-20.1	3.2		-0.5	0.1
KUW 8 10	10.9	-19.8	3.2		-0.3	0.2
KUW 8 11	10.9	-19.8	3.2			
KUW 8 12	10.6	-20.1	3.2		-0.5	-0.6
KUW 8 13	10.6	-20.4	3.2		-0.3	-0.4
KUW 8 14	10.6	-20.5	3.2			
KUW 8 15	11.0	-20.6	3.2			

Sample number	$\delta^{15}\text{N}\text{‰}$	$\delta^{13}\text{C}\text{‰}$	C:N		differences $\delta^{15}\text{N}\text{‰}$	differences $\delta^{13}\text{C}\text{‰}$
KUW 8 16	11.3	-20.6	3.2			
KUW 8 17	11.2	-20.7	3.2			
KUW 8 1 dentine	11.9	-20.8	3.2			
KUW 8 2 dentine	11.6	-20.3	3.2			
KUW 8 3 dentine	11.2	-20.4	3.2			
KUW 8 4 dentine	10.8	-20.4	3.2			
KUW 8 5 dentine	10.8	-20.3	3.2			
KUW 8 6 dentine	10.9	-19.5	3.2			
KUW 8 7 dentine	10.8	-20.1	3.2			
KUW 8 8 dentine	10.6	-20.1	3.2			
KUW 8 9 dentine	11.6	-20.2	3.2			
KUW 8 10 dentine	11.3	-20.1	3.2			
KUW 8 11 dentine						
KUW 8 12 dentine	11.1	-19.5	3.2			
KUW 8 13 dentine	10.8	-20.0	3.2			
HP2BA897-1	11.8	-20.4	3.2		-1.3	-0.3
HP2BA897-2	12.5	-20.4	3.2		3.0	0.2
HP2BA897-3	10.8	-20.7	3.2		-1.0	-0.1
HP2BA897-4	9.4	-20.6	3.2		-1.2	0.1
HP2BA897-5	9.6	-20.6	3.2		0.3	0.0
HP2BA897-6	9.3	-20.6	3.2		-0.3	0.0
HP2BA897-7	9.5	-20.5	3.2		-1.0	-0.2
HP2BA897-8	9.5	-20.5	3.2		-1.1	-0.1
HP2BA897-9	9.4	-20.5	3.2		-0.1	0.1
HP2BA897-10	9.6	-20.6	3.3		-0.1	-0.1
HP2BA897-11	9.7	-20.5	3.2		0.0	0.0
HP2BA897-12	9.9	-20.4	3.2		0.0	0.0
HP2BA897-13	10.1	-20.4	3.2		0.1	0.0
HP2BA897-14	10.3	-20.3	3.2		0.0	0.0
HP2BA897-15	10.3	-20.3	3.2		0.0	0.0
HP2BA897-16	10.7	-20.4	3.2		-0.1	0.1
HP2BA897-17	10.6	-20.3	3.2		-0.3	0.0
HP2BA897-18	10.5	-20.4	3.3		-0.2	-0.2
HP2BA897-19	10.1	-20.4	3.2		0.1	0.0
HP2BA897-20	9.6	-20.4	3.3		-0.3	-0.1
HP2BA897-1 dentine	13.1	-20.1	3.2			
HP2BA897-2 dentine	9.4	-20.6	3.2			
HP2BA897-3 dentine	11.8	-20.6	3.2			
HP2BA897-4 dentine	10.6	-20.7	3.2			
HP2BA897-5 dentine	9.3	-20.5	3.2			

Sample number	$\delta^{15}\text{N}\text{‰}$	$\delta^{13}\text{C}\text{‰}$	C:N		differences $\delta^{15}\text{N}\text{‰}$	differences $\delta^{13}\text{C}\text{‰}$
HP2BA897-6 dentine	9.6	-20.6	3.2			
HP2BA897-7 dentine	10.5	-20.3	3.2			
HP2BA897-8 dentine	10.6	-20.4	3.3			
HP2BA897-9 dentine	9.5	-20.6	3.3			
HP2BA897-10 dentine	9.7	-20.5	3.2			
HP2BA897-11 dentine	9.7	-20.4	3.2			
HP2BA897-12 dentine	9.8	-20.4	3.2			
HP2BA897-13 dentine	10.0	-20.3	3.2			
HP2BA897-14 dentine	10.3	-20.3	3.2			
HP2BA897-15 dentine	10.3	-20.3	3.2			
HP2BA897-16 dentine	10.8	-20.5	3.2			
HP2BA897-17 dentine	10.8	-20.3	3.2			
HP2BA897-18 dentine	10.8	-20.2	3.2			
HP2BA897-19 dentine	10.0	-20.4	3.3			
HP2BA897-20 dentine	9.9	-20.3	3.3			
HP2BA503-1	9.6	-20.8	3.2		0.0	0.0
HP2BA503-2	9.6	-20.7	3.2		0.0	0.1
HP2BA503-3	9.6	-20.6	3.2		0.1	0.4
HP2BA503-4	9.6	-20.5	3.2		0.0	-0.1
HP2BA503-5	9.9	-20.6	3.3		0.6	-0.3
HP2BA503-6	9.1	-20.3	3.3		-0.2	0.1
HP2BA503-7	9.8	-20.3	3.2		0.6	0.2
HP2BA503-8	9.0	-20.3	3.2		-0.1	0.0
HP2BA503-9	9.2	-20.2	3.2		-0.1	0.0
HP2BA503-10	9.3	-20.2	3.2		-0.3	0.0
HP2BA503-11	9.7	-20.1	3.2		-0.9	0.1
HP2BA503-12	10.0	-20.1	3.2		-1.5	0.4
HP2BA503-13	10.9	-20.3	3.2			
HP2BA503-14	12.1	-20.8	3.2			
HP2BA503-15	12.4	-20.8	3.3			
HP2BA503-16	12.7	-20.5	3.3			
HP2BA503-1 dentine	9.6	-20.8	3.2			
HP2BA503-2 dentine	9.6	-20.8	3.2			
HP2BA503-3 dentine	9.5	-20.9	3.2			
HP2BA503-4 dentine	9.6	-20.4	3.2			
HP2BA503-5 dentine	9.3	-20.3	3.2			
HP2BA503-6 dentine	9.3	-20.4	3.3			
HP2BA503-7 dentine	9.2	-20.5	3.3			
HP2BA503-8 dentine	9.1	-20.4	3.2			
HP2BA503-9 dentine	9.4	-20.2	3.2			
HP2BA503-10 dentine	9.6	-20.2	3.2			

Sample number	$\delta^{15}\text{N}\text{‰}$	$\delta^{13}\text{C}\text{‰}$	C:N		differences $\delta^{15}\text{N}\text{‰}$	differences $\delta^{13}\text{C}\text{‰}$
HP2BA503-11 dentine	10.6	-20.2	3.3			
HP2BA503-12 dentine	11.5	-20.5	3.2			
HP2BA903-1	10.1	-20.9	3.4			
HP2BA903-2	9.9	-21.2	3.4		0.3	-0.7
HP2BA903-3	9.4	-20.4	3.2		-0.3	0.1
HP2BA903-4	10.0	-20.5	3.2		0.0	0.0
HP2BA903-5	10.3	-20.6	3.4		-0.3	0.2
HP2BA903-6	10.6	-20.5	3.3		-0.6	-0.1
HP2BA903-7	10.2	-20.5	3.2		-0.4	0.0
HP2BA903-8	9.8	-20.5	3.2		-0.2	0.0
HP2BA903-9	9.6	-20.5	3.3			
HP2BA903-10	10.0	-20.7	3.3			
HP2BA903-2 dentine	9.6	-20.5	3.2			
HP2BA903-3 dentine	9.7	-20.5	3.2			
HP2BA903-4 dentine	10.0	-20.5	3.2			
HP2BA903-5 dentine	10.6	-20.8	3.5			
HP2BA903-6 dentine	11.2	-20.4	3.3			
HP2BA903-7 dentine	10.6	-20.5	3.3			
HP2BA903-8 dentine	10.0	-20.5	3.3			

Table 2. $\delta^{13}\text{C}$ and $\delta^{15}\text{N}$ values and C:N ratios for incremental dentine and collagen samples from Kilkenny Union Workhouse and West Heselton, and differences between the samples. Analytical error is shown as vertical bars on the $\delta^{15}\text{N}$ profile of KUW 2.