

Synergistic toughening and compatibilisation effect of Poly(butylene succinate) in PLA/poly-caprolactone blends

Nikolaos Kassos¹, Adrian L.Kelly¹, Timothy Gough¹ and Andrew A. Gill²

¹ Polymer IRC, School of Engineering, University of Bradford, BD7 1DP, UK

² Floreon- Transforming Packaging Ltd, Kroto Innovation Centre, University of Sheffield, 318 Broad Lane, S3 7HQ, UK

E-mail: nkassos@student.bradford.ac.uk

Abstract

Binary and ternary blends of a polylactic acid matrix with polycaprolactone (PCL) and polybutylene succinate (PBS) were produced by twin screw extrusion, containing up to 30wt% loading. Mechanical, thermal and rheological characterisation techniques were used to quantify properties of the different blend formulations and miscibility was investigated using scanning electron microscopy. PCL is known to act as an impact modifier in PLA but to cause a corresponding reduction in strength. Results showed that addition of both PBS and PCL separately caused a reduction in melt viscosity, elastic modulus and tensile strength, but an increase in impact strength and strain at break. Analysis of morphology suggested that immiscibility was evident, particularly at higher PCL and PBS loadings. Results indicated that incorporation of a small loading of PBS had a synergistic effect on the PLA-PCL blend properties. Miscibility was improved and enhanced mechanical properties were observed for a ternary blend containing 5wt% of both PBS and PCL compared to blends containing 10% of each polymer alone.

Keywords: polylactic acid, toughness, blends, bioplastics, biodegradable, mechanical properties, rheology, phase separation

1. Introduction

Many bioplastics are considered to be biodegradable, meaning they can be degraded by microbes under suitable conditions [1], although technically all plastics are biodegradable to some extent. Although many production routes exist, lactic acid is most commonly produced by the fermentation of glucose at 40-45 °C in the presence of microorganisms, using water as a solvent [2, 3]. There are two ways of synthesizing PLA, by direct polycondensation of lactic acid in the presence of catalyst at low pressure or by ring opening polymerisation [4]. PLA can range from completely amorphous to highly crystalline, and because of its clarity and glossy surface is developing as an effective material for numerous applications such as packaging, fabrics and tableware. PLA has a glass transition temperature (T_g) around 50-60 °C, while the melting temperature (T_m) is relatively low (130-175 °C). Elastic modulus of PLA ranges between 2 and 3 GPa with a yield point at 53-70 MPa and tensile strength of 44-66 MPa [5]. There are many ways of modifying the properties of PLA, both during processing (conditions, orientation) and post-processing (annealing). Several attempts to increase PLA crystallinity have been reported, with the intention of optimising properties such as strength, stiffness and heat resistance. However processability and impact strength cannot readily be improved and in some cases were adversely affected [6, 7].

Toughening PLA by blending it with other materials has also been attempted by several researchers [8]. Toughness is defined as the amount of energy that a material can absorb before it breaks and the relatively low impact strength of PLA is considered a limitation in many applications. Polycaprolactone has been widely blended with PLA, because of its nontoxicity and biocompatibility [9]. Depending on the molecular weight of both materials, immiscible blends can be formed, given the lack of the specific interactions between them [10]. Most attempts at blending PLA with PCL resulted in an increase in toughness but a decrease in strength and stiffness [11-13]. Todo et al added 5, 10 and 15wt% loadings of PCL to PLA to investigate the micro-fracture mechanisms of the blends. The materials were found to be immiscible, with PCL being dispersed in spherical phases within the PLA [14]. Ostafinska et al examined the properties of PLA-PCL blends, where PLA grades with different viscosity values were blended with 20% PCL [15]. Results showed that the viscosity of PLA influenced the PCL particle size and distribution. This had an effect on toughness and viscosity of the blends.

Polybutylene succinate is a long chain polyester with T_g of -32 °C, T_m of 114-115 °C, high HDT and elongation at break. In general, PLA and PBS have similar properties, with PBS being more flexible, with lower strength and higher toughness [16]. Linear PBS has higher mechanical properties and elongation at break, whereas long chain branched PBS has a lower melt flow rate and tensile properties [17]. In general PBS has been found to increase the toughness of PLA at low concentrations and slightly increase the heat deflection temperature [16]. At similar molecular weights, PBS and PLA are thermodynamically miscible, but when blended in higher concentrations immiscibility occurs. The morphology and thermal properties of PLA-PBS blends have been studied in detail [18-20], where semi-crystalline/semi-crystalline blends were observed with two distinct melting peaks. Small angle X-ray scattering revealed that within the blend the PBS component was expelled from interlamellar regions of PLA. It was also found that PBS affected the cold crystallisation of PLA and its melting behaviour. This was explained by the thermodynamic immiscibility of the two materials [21]. However, it showed that PBS had a nucleating effect in PLA and that the viscosity of PLA was increased at low frequencies. This could be explained by the research of Yokohara and Yamaguchi [19] where it is stated that the entanglement molecular weight of PLA was lower than that of PBS due

to their immiscibility in the molten state. Additional studies showed that the droplets of PBS inside PLA acted as crystallisation nuclei for PLA, accelerating crystal formation [20]. At an addition of 1% of PBS in PLA, the produced blend had higher strength and modulus [22]. The relative viscosities of the two materials affected the co-continuous morphology of the blend with PBS having a more fibrillar phase structure inside PLA. This resulted in increase of ductility. However the strength and modulus decreased as the amount of PBS increased [23].

It is clear from the literature that both PCL and PBS have been used extensively to increase the toughness of PLA and influence its melt behaviour. Generally, higher fractions of PBS or PCL resulted in better impact resistance but at the cost of reduced mechanical strength and stiffness. The effect of tertiary blends of PLA, PCL and PBS however, is less well understood. In this study, a commercial grade of PLA was blended with PCL and PBS in both binary and ternary formulations, with the aim of increasing toughness without significant reduction in mechanical properties.

2. Methods

2.1 Sample preparation

PLA matrix material (Ingeo™ 4043D, 98% L content) was acquired from NatureWorks LLC, USA . PCL (CAPA 6250) with molecular weight of 25,000 g/mol was acquired from Innovia Solutions (UK) and PBS (Mitsubishi FZ91PD) were acquired from Mitsubishi chemical Corp (MW of 123,000 g/mol). All polymers were received in pellet form. 3.5 kg of each blend was extruded using an APV 19mm twin screw extruder with L: D ratio of 25:1. The materials were mixed prior to processing and dried under vacuum at 45°C for 24hrs. The materials were then fed into the hopper at a rate of 1.44 kg/hr and extruded at a screw rotation speed of 170 rpm before being quenched in a water bath at room temperature and pelletized. The temperature profile of the heating zones with a direction from hopper to die was 160°C→170°C→180°→180°→190°C. Pure PLA and 16 PLA blends were produced; Table 1 displays the formulation of each blend. Each blend was then dried under the same conditions and tensile specimen bars dimensions (parallel length/thickness/width: 80/4/10 mm) were produced using a Fanuc s-200i 100A injection moulding machine at a mould temperature of 30°C for the IZOD impact and morphology tests. Moulding conditions are shown in Table 2. For the tensile tests a Dr Collin Teach-Line E 20T sheet extruder was used with a screw speed of 70 rpm and a temperature profile of the heating zones with a direction from hopper to die was 140°C→150°C→190°→200°→200°C. The formulation of each blend will be denoted with the following coding: (PLA wt%, PBS wt%, PCL wt%).

PLA wt%	100	95	90	80	70	95	90	80	70	98	90	85	85	85	85	80	70
PBS wt%	0	5	10	20	30	0	0	0	0	1	5	10	14	5	1	10	15
PCL wt%	0	0	0	0	0	5	10	20	30	1	5	5	1	10	14	10	15

Table 1 Formulation of binary and ternary PLA based bio-compounds

Injection settings	Extrusion settings	Temperature settings
--------------------	--------------------	----------------------

Injection speed	50 (mm/s)	Back pressure	40 (Bar)	Feed zone	35 °C
Position transfer	10 (mm)	Speed	100 rpm	Zone 1	140 °C
Pack pressure	500 (Bar)	DCMP distance	5 (mm)	Zone 2	180 °C
Packing time	30 (sec)	DCMP velocity	5 (mm/s)	Zone3	200 °C
Shot size	33 (mm)	Cool time	12 (sec)	nozzle	200 °C

Table 2 injection moulding conditions

2.1 Characterisation techniques

The viscosity of the blends was measured using a Rosand RH10 twin bore capillary rheometer at a set temperature of 200°C. Tests comprised 8 stages with shear rates ranging from 50 to 5,000 s⁻¹ using 1mm diameter dies with lengths of 16mm and <0.2mm. Three tests were attempted for each blend which were dried prior to testing in a vacuum oven at 45°C for 24hrs. Tensile properties of the materials were evaluated using a Messphysik 20-10 tensometer equipped with a video extensometer (pixelink 2.3 Mono 92 Fps) for more accurate measurement of strain. Five specimens of each blend with dimensions of (width x thickness x gauge length) 2(mm)x0.5(mm)x10(mm) were characterised by calculating the modulus of elasticity, tensile strength and strain at break. A strain rate of 1% was set (8mm/min test speed) and 7 targets (black lines) were drawn in the parallel length of each specimen for the video extensometer to detect.

Impact strength of the blends was measured using an Instron Dynatup POE 2000. Five IZOD (pendulum) impact tests performed for each blend. The injection moulded specimens were notched in the middle of the gauge section (2mm±0.2) and the impact strength was calculated based on equation (1) where the area under the curve of the load-deflection diagram (E_T=total impact energy) was divided by the nominal impact area of the specimen (area of the notch in mm²).

$$a_{IN} = \frac{E_T}{h \times b} \times 10^3 \quad (1)$$

Differential scanning calorimetry (DSC) tests were performed using a Discovery TA Q20 instrument, with a heat-cool-heat step process of 10°C/min heating rate from 20-220°C under 50ml/min N₂ supply. Measurements were made on three ~10mg specimens cut from the gauge length of the tensile bars of each blend. Morphology of the materials was investigated using an FEI Quanta 400 scanning electron microscope. Moulded bars were cryo-fractured under liquid nitrogen in the middle of the gauge section and subsequently gold plated (2 minutes sputtering of 25mA current) prior to SEM analysis of the fracture surface.

3. Results and discussion

3.1 Rheological properties

To provide a quantitative comparison of rheological data, apparent shear viscosity measured at a constant shear rate of 360 s⁻¹ is shown in Figure 1 for all blends. Viscosity of binary blends containing PCL followed a linear reduction with increase in wt% of PCL, in agreement with the conclusions of Wu *et al.* [24] and Zhao *et al.* [25]. PBS had a less significant effect on viscosity reduction, and at 5 wt% an increase in viscosity was observed, which may be an indication of the immiscibility of the two materials in the molten state [19, 26]. The effects of PCL and PBS on viscosity could be explained by the different density and melting points of the polymers (T_{m(PCL)} =55°C and T_{m(PBS)}=110°C). For ternary blends, incorporation of PCL and PBS had an additive effect on observed viscosity, broadly in

line with what would be expected from the binary blend results. For example, the (80,10,10) blend exhibited a viscosity between the values measured for (80,20,0) and (80,0,20).

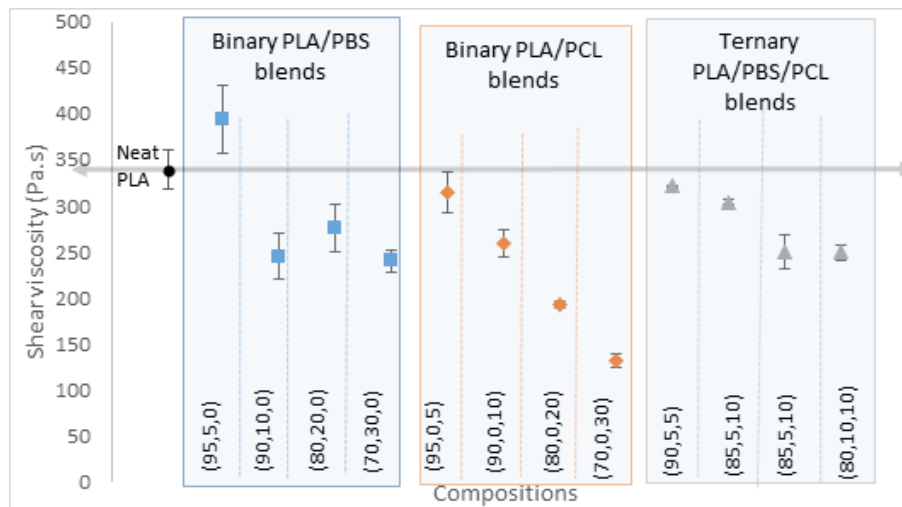


Figure 1 Shear viscosity of PLA based blends at $360 \text{ (s}^{-1}\text{)}$ shear rate from capillary rheometry at 200°C (error bars indicating the Standard deviation between the three test runs of each blend).

3.2 Mechanical properties

Impact strength results are displayed in Figure 2, which showed that incorporation of PCL and PBS resulted in a significant increase in impact strength compared to pure PLA. As expected, neat PLA exhibited a relatively low impact strength of $2.18 \text{ (kJ/m}^2\text{)}$, but blends of PCL and PBS even at low loadings resulted in higher toughness. PCL had a more significant effect on impact strength and at 30wt% loading the blend had an impact strength of double that of neat PLA. PBS had a less significant effect on impact strength, with 30wt% loading of PBS providing an increase of around 50%. Ternary blends exhibited impact strengths in between those containing PCL and PBS alone. However, at low loadings of both polymers, for example (90,5,5) the impact strength was higher by 38% and 8% than corresponding binary blends containing 10wt% of PBS and PCL respectively, which suggests that addition of PBS had a synergistic effect to PCL alone.

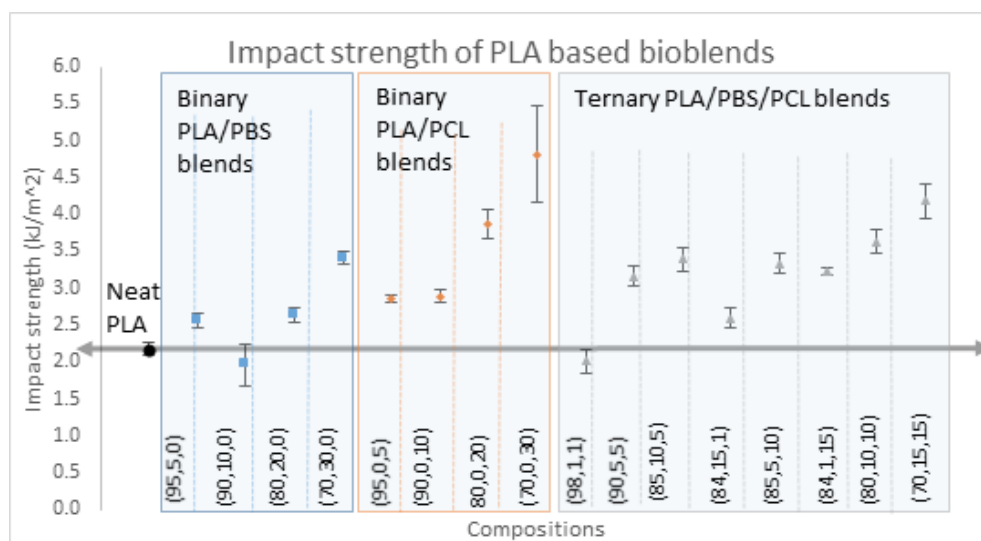


Figure 2 Impact strength results (5 repeats for each blend with standard deviation described by error bars) of PLA based bio-compounds, by IZOD impact test with 90° drop angle and average impact velocity of 3.5 (m/s) .

Elastic modulus and tensile strength results are shown in Figure 3; broadly similar trends were observed for each set of data. Addition of both PCL and PBS resulted in a decrease in elastic modulus and tensile strength of PLA as loading increased, with PCL having a more significant effect. At low loadings, binary blends exhibited an elastic modulus around 18-20% lower than neat PLA, which decreased to 40% lower at 30wt% loading of PCL in agreement with previous findings [13, 25]. The binary blends containing PBS exhibited a slight decrease in tensile strength at a relatively constant rate from 7% to 13% decrease. Whereas the binary blends containing PCL had a more significant decrease in strength. Ternary blends containing both PCL and PBS also exhibited a reduction in modulus and tensile strength, broadly in between those of the two binary blends. However, at low loadings of both polymers, for example (90,5,5), both elastic modulus and tensile strength values were higher by nearly 10% than corresponding binary blends containing 10% of the two polymers. This again suggested a beneficial interaction between the PBS and PCL within the PLA matrix which correlated to the observations made on impact strength.

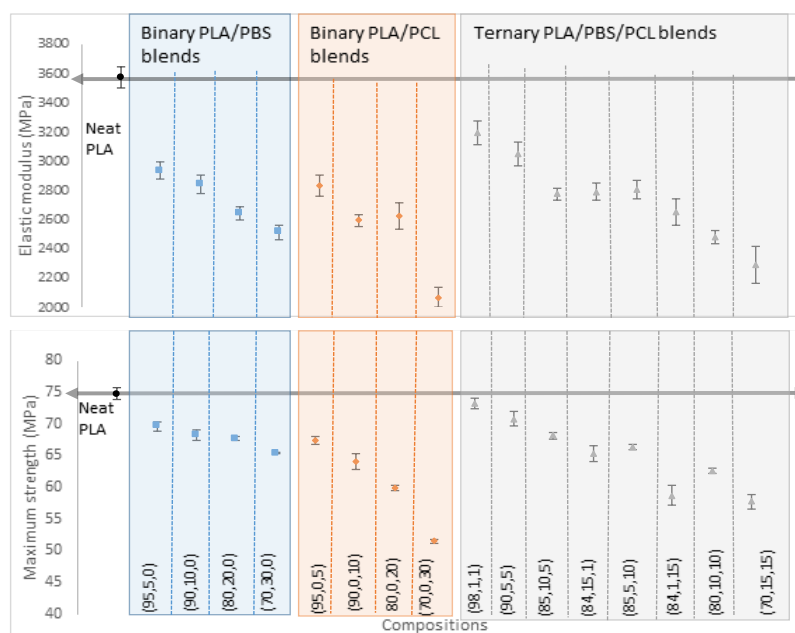


Figure 3 Elastic modulus (above) and tensile strength (below) results of all PLA-based blends from tensile testing with 1% strain rate and use of video extensometer (the standard deviation of the tensile properties for each blend is indicated by the bars)

As shown in Figure 4, strain at break increased as the amount of PBS increased in PLA with values from 25% to 454%. On the contrary the binary blends containing PCL had higher values (206%) of strain at break at the lowest loading (95,0,5) and as the amount of PCL increased, toughness decreased, where eventually at 20% and 30% loadings toughness was lower than that of neat PLA. The blends that consisted of both of the additives presented an impressively increase in strain at break, even at low loadings. Where formulations that had wt% of PBS from 5-15% of PBS exhibited strain at break of 350%-450%. However, when the amount of PCL was 10% or higher blends, exhibited lower values, which follows the effect of PCL in the binary blends results. This indicates a limitation on the toughening mechanism of PCL in PLA regarding elongation at loadings of 10% and higher.

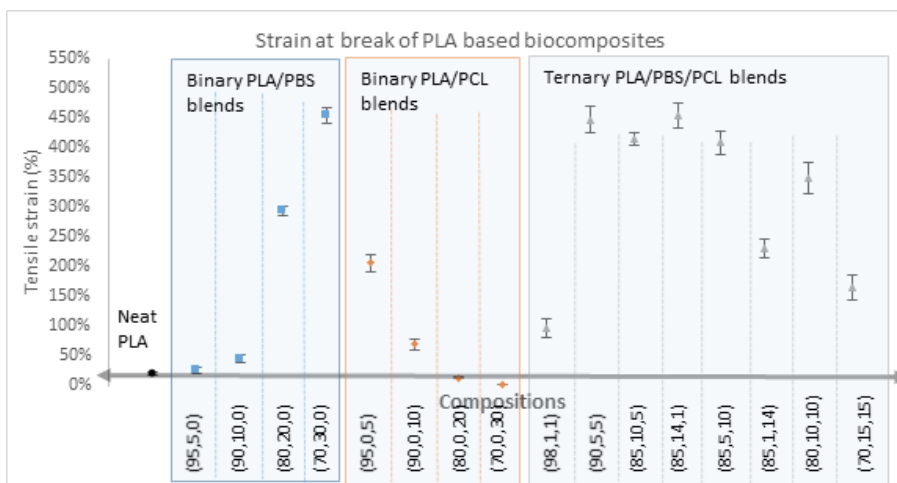


Figure 4 Strain at break results of all PLA-based blends from tensile testing with 1% strain rate and use of video extensometer (the value range of the tensile properties for each blend is indicated by the bars)

3.3 Thermal properties

DSC results from a heat-cool-heat (HCH) cycle of 10°C/min from 20-220°C are displayed for neat PLA in Figure 5. On first heating, a deep transition was observed at around 60°C, indicating a relaxation peak (aging) of enthalpy (Eg) which was also observed during second heating cycles at a lower magnitude [17]. Upon further heating PLA exhibited a crystallisation exotherm between 100-130°C before melting at 151 °C. On cooling, crystallisation was not observed but a characteristic glass transition occurred at 57°C. Similar behaviour was observed during second heating but with a less pronounced relaxation endotherm at around 60°C.

Material/blend	1st heat			Cooling		2nd heat		
	Tg °C	Tcc °C	Tm °C	Tg °C	Tc °C	Tg °C	Tcc °C	Tm °C
PLA,PBS,PCL								
Virgin PLA	62	N/A	151	57	N/A	60	N/A	152
Virgin PBS	N/A	N/A	115	N/A	66	N/A	N/A	114
Virgin PCL	N/A	N/A	66	N/A	28	N/A	N/A	56
(100,0,0)	62	112	149	57	N/A	59	113	149
(95,5,0)	61	105	150	56	N/A	59	110	148
(90,10,0)	60	103	153	56	N/A	59	109	148
(80,20,0)	60	104	149	56	61	59	117	149
(70,30,0)	60	101	149	N/A	70	58	119	148
(95,0,5)	61	109	148	57	28	60	129	152
(90,0,10)	60	107	149	58	35	61	126	151
(80,0,20)	60	104	149	56	35	59	117	149
(70,0,30)	61	108	147	58	34	61	126	150
(90,5,5)	60	104	149	47	31	60	127	151
(85,10,5)	60	103	149	57	32	60	126	151
(85,5,10)	61	103	151	57	29	62	123	150
(80,10,10)	59	104	148	57	36	62	125	151

Table 3 Overall temperature transition results, from DSC tests (Heat-Cool-Heat). Cycles with Ramp 10°C/min from 20-220°C.

Table 3 shows the average temperature values extracted from DSC data for all blends. Virgin materials were characterised in as-received pellet form as well as injection moulded samples of PLA and all blends. There was a notable difference in thermal behaviour between the virgin PLA and an injection moulded specimen produced from the same material; the virgin PLA did not exhibit any crystallisation peak during the three cycles. This could be explained from the morphology of the pellets which were highly crystalline, compared to the moulded bar which was predominantly amorphous. Virgin PBS and PCL during the same heating cycles exhibited only melting peaks when heated (at 115 and 66 °C respectively). During cooling a crystal formation peak occurred at 66°C for PBS and 28°C for PCL. This means that PCL was melting during the Glass transition of PLA and PBS during the cold crystallisation of PLA and both additives exhibited crystal formation during cooling around the glass transition temperature of PLA.

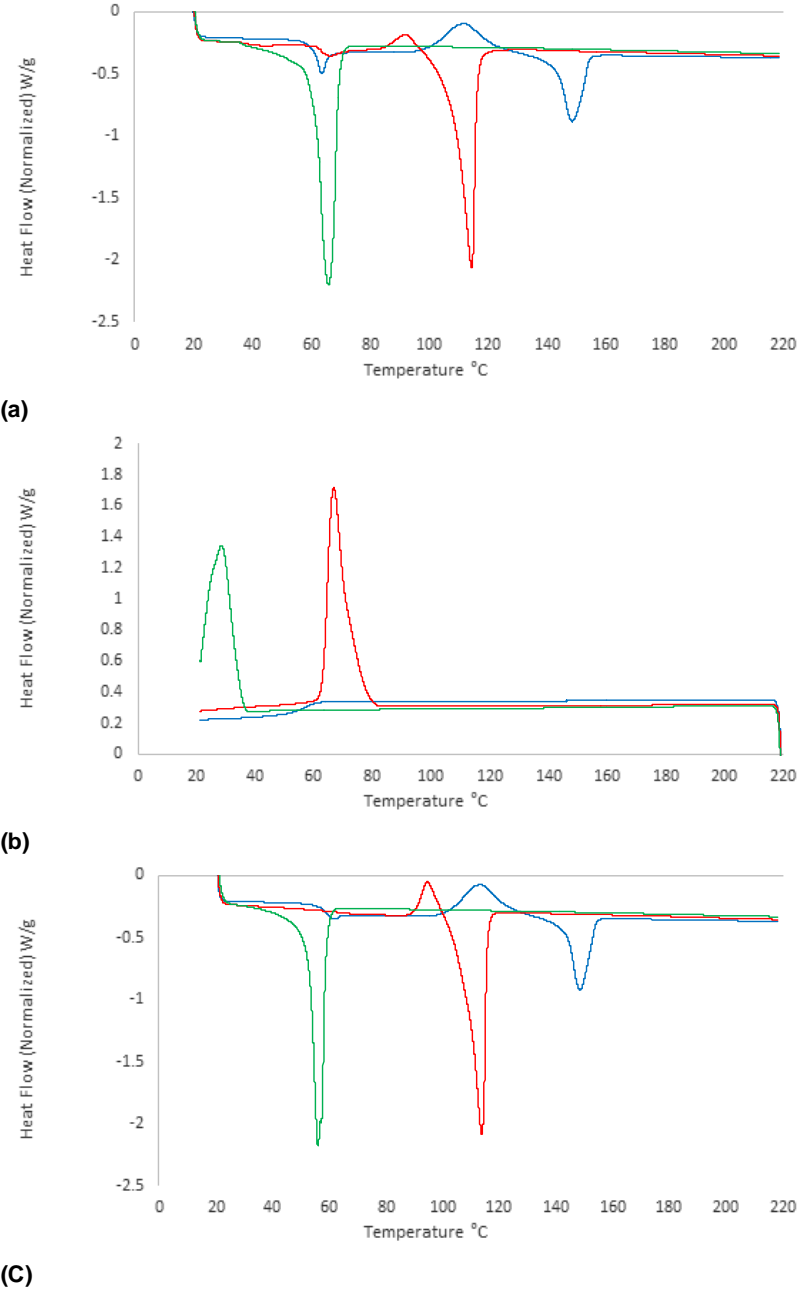


Figure 5 DSC graphs of the virgin materials PLA (Blue) PBS (Red) and PCL (Green), with graph (a) results during 1st heating step, (b) during cooling and (c) during 2nd heating.

Representative DSC thermograms are shown in Figure 6 for neat PLA, 10wt% loading of each binary blend and the (80,5,5) ternary blend. Second heating values were used to compare each material with an identical thermal history. A slight decrease in the glass transition temperature was observed in the binary PLA-PBS blends, whereas T_g values from the blends containing PCL exhibited a slight increase. This could be explained by the fact that PCL melted close to the glass transition temperature of PLA, as shown in Figure 5. The binary blend containing PBS (Figure 6b) appeared to have an overlapped peak around the cold crystallisation temperature, indicating that in the blend at the temperature region of 90-130°C PLA crystals were formed and PBS was melting.

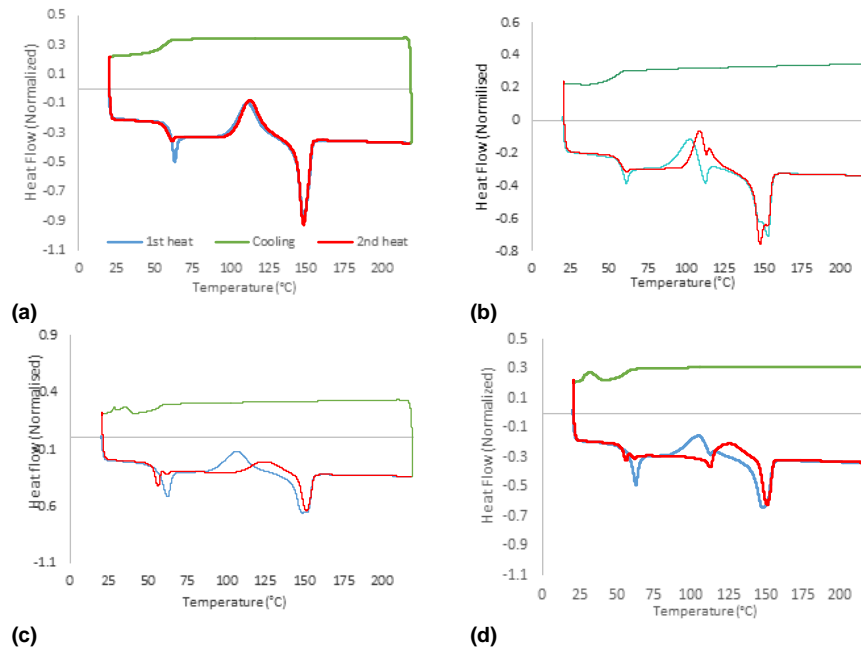


Figure 6 DSC graphs of neat PLA (a), binary blends “b” (90,10,0) and “c” (90,0,10) and ternary blend “d” with formulation (90,5,5).

The binary PCL blends exhibited thermal immiscibility, with the melting peak of PCL occurring at a similar temperature region as the glass transition of PLA (55°C)[27]. The crystallisation peak of PLA was affected by the addition of PCL, during the first heat cycle the crystallisation peak temperature decreased by 4°C and by 20° during the second heat. PCL exhibited a recrystallisation peak in all the binary blends during cooling (at 28°C), which increased as the wt% of the additive also increased. The thermal compatibility of the additives on the ternary blends did not change, exhibiting distinct but overlapping peaks with the glass transition and crystallisation of PLA.

3.4 Morphology

SEM images of the fracture surfaces of PLA/PBS and PLA/PCL binary blends are shown in Figure 7. PLA/PBS blends at loadings of 5wt% and 30wt% are shown in Figures 7a and 7c respectively. These indicate that PBS was immiscible within PLA, particularly at higher loadings. Figures 7b and 7d show that PCL was also immiscible with PLA, evidenced by voids on the fracture surface, suggesting that PCL was dispersed in spherical droplets with diameters less than 0.5µm [14]. At higher amounts of PCL (30 wt%, Figure 7d), PCL spheres increased in size (diameter ~1-2µm) and the fracture surface demonstrated a more rugged, stepped pattern more similar to PBS[28]. As previously shown, the addition of PCL had a more significant effect on the properties of PLA than PBS, including viscosity and impact strength. During impact, The PCL spheres dispersed inside the blend system absorb energy applied to the specimen. This morphology, according to [14], increases the craze formation, so the PCL spheres act as a damper inside the material. When under tension though this discontinuous

morphology reduces the strength and stiffness of the material. Resulting in the decreasing effect of strain at break as the amount of PCL increased. Although PBS was also found to be immiscible with PLA, the SEM results showed that PBS segments were dispersed inside PLA [29]. At the 5% PBS added binary blend, a slight increase in viscosity was observed. This was because the immiscibility between the two materials at that additive loading was not that notable, and it has been stated that at low loadings of PBS, due to the molecular entanglement of the two materials viscosity can increase [22, 26]. The shape of the dispersed PBS inside the PLA blend system, explains why the additive modifies the mechanical properties of PLA but not at the same rate as with PCL.

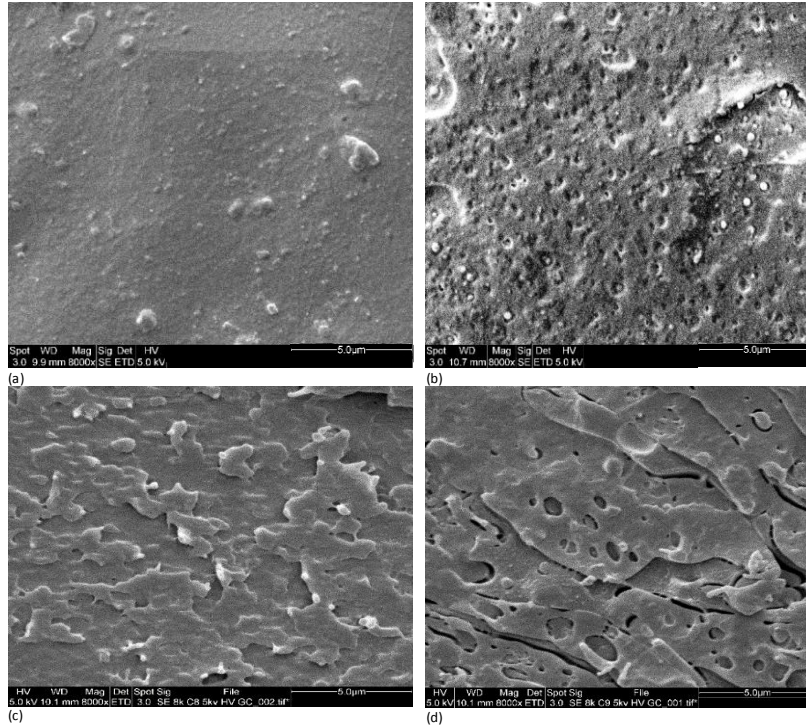


Figure 7 SEM images from the cross section of the bars at 8000x magnification. Binary blend (95,5,0) is image (a), binary blend with 5% PCL (95,0,5) is image (b), (70,30,0) and (70,0,30) are images (c) and (d) respectively.

This type of miscibility can explain why PBS was so effective in increasing strain at break of PLA, the blend matrix had a bonding material dispersed inside, which during tension promoted the formation of necking, therefore increase in toughness. Whereas PCL compromised the structure of the matrix material, so during tension the voids increased in size in a fibrillar way that resulted in tearing the samples.

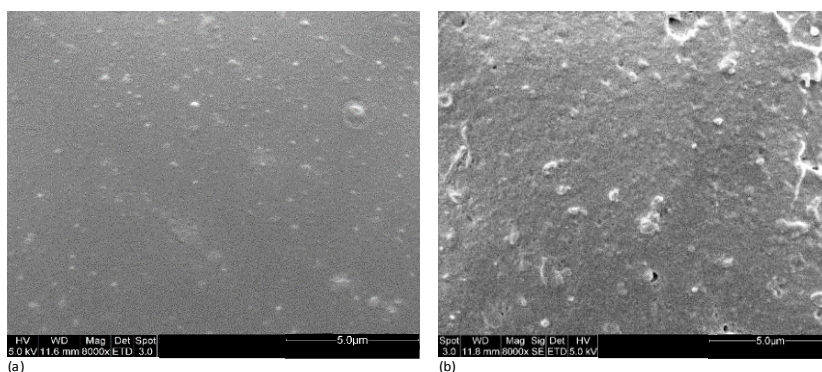


Figure 8 SEM images from the cross section of the bars at 8000x magnification (a=neat PLA, b= ternary blend (90,5,5)).

When both additives were blended with PLA at 5% loading, as shown in Figure 8, immiscibility was less pronounced than compared to 5wt% of either PCL or PBS. The fractured surface exhibited smaller sized and less voids. This suggested that droplets of PCL had some interaction with the PBS within the blend system. This explains why the impact strength of the ternary blend that contained 90% of PLA (90,5,5) was higher than the impact strength of the binary ones (90,10,0) and (90,0,10). This phenomenon could be parallelised with Nagarajan's theory, who stated that the balance between the entanglement density and the number of the skeletal bonds in an entanglement strand effects the nature of fracture of the blend (either yielding or crazing)[30]. By adding both materials these two factors were changed, which provided different results than when blended singularly. This structure resulted in maintaining the strength of PLA during tension, especially for the (90,5,5) formulation.

4. Conclusion

A range of binary and ternary commercial grade PLA based blends were compounded using a twin screw extruder, and injection moulded tensile bars were produced for characterisation of impact properties and phase separation. This investigation showed that the suggested formulation would be an incorporation of a small amount of both of the additives (PLA=90 wt%,PBS=5 wt%,PCL=5wt%), a blend that had increased toughness without a significant reduction in strength and stiffness. Both additives acted as melt modifiers, with PCL having a more linear plasticising effect in PLA than PBS. The impact strength of PLA was increased with addition of either PBS or PCL, more significantly for PCL, but strength and stiffness were reduced. The additives were not thermally compatible in either binary or ternary blends. PCL was observed to be dispersed in a spherical form inside PLA with a particle size which increased as the additive loading increased. PBS was dispersed as larger, less regular shaped particles inside the blend matrix. When both additives were blended with PLA, the PCL sphere size was reduced significantly. This change in morphology had a synergistic effect on both impact strength and tensile properties of the blend, especially at the (90,5,5) formulation, indicating a compatibilising effect of PBS in the PLA/PCL blend.

Acknowledgements

The authors wish to thank the financial support of Floreon- Transforming Packaging Ltd through the PhD sponsorship and materials provision and the University of Bradford Polymer IRC technical staff for their help and guidance.

References

- [1] Ahmed T, Shahid M, Azeem F, Rasul I, Shah A, Noman M, Hameed A, Manzoor N, Manzoor D I and Muhammad S 2018 *Biodegradation of plastics: current scenario and future prospects for environmental safety* vol 25
- [2] Madigan M T, Martinko J M and Parker J 2000 *Brock biology of microorganisms* (Upper Saddle River, NJ: Prentice Hall)
- [3] Van Wouwe P, Dusselier M, Vanleeuw E and Sels B 2016 Lactide Synthesis and Chirality Control for Polylactic acid Production *ChemSusChem* **9** 907-21
- [4] Roether J A, Gough J E, Boccaccini A R, Hench L L, Maquet V and Jérôme R 2002 Novel bioresorbable and bioactive composites based on bioactive glass and polylactide foams for bone tissue engineering *Journal of Materials Science: Materials in Medicine* **13** 1207-14
- [5] Zhong Y, Zhang Y, Yang J, Li W, Wang Z, Xu D, Chen S and Ding Y 2013 Exponentially increased nucleation ability for poly(L-lactide) by adding acid-oxidized multiwalled carbon nanotubes with reduced aspect ratios *Science China Chemistry* **56** 181-94
- [6] Ghosh S, Viana J C, Reis R L and Mano J F 2007 Effect of processing conditions on morphology and mechanical properties of injection-molded poly(L-lactic acid) *Polymer Engineering & Science* **47** 1141-7
- [7] Renouf-Glauser A C, Rose J, Farrar D F and Cameron R E 2005 The effect of crystallinity on the deformation mechanism and bulk mechanical properties of PLLA *Biomaterials* **26** 5771-82

- [8] Krishnan S, Pandey P, Mohanty S and Nayak S K 2016 Toughening of Polylactic Acid: An Overview of Research Progress *Polymer-Plastics Technology and Engineering* **55** 1623-52
- [9] Lopes M S, Jardini A L and Filho R M 2012 Poly (Lactic Acid) Production for Tissue Engineering Applications *Procedia Engineering* **42** 1402-13
- [10] Navarro-Baena I, Sessini V, Dominici F, Torre L, Kenny J M and Peponi L Design of biodegradable blends based on PLA and PCL: From morphological, thermal and mechanical studies to shape memory behavior *Polymer Degradation and Stability*
- [11] Tsuji H, Yamada T, Suzuki M and Itsuno S 2003 Blends of aliphatic polyestersPart 7. Effects of poly(L-lactide-co-ε-caprolactone) on morphology, structure, crystallization, and physical properties of blends of poly(L-lactide) and poly(ε-caprolactone) *Polymer International* **52** 269-75
- [12] Matta A K, Rao R U, Suman K N S and Rambabu V 2014 Preparation and Characterization of Biodegradable PLA/PCL Polymeric Blends *Procedia Materials Science* **6** 1266-70
- [13] Vilay V, Mariatti M, Ahmad Z, Pasomsouk K and Todo M 2009 Characterization of the mechanical and thermal properties and morphological behavior of biodegradable poly(L-lactide)/poly(ε-caprolactone) and poly(L-lactide)/poly(butylene succinate-co-L-lactate) polymeric blends *Journal of Applied Polymer Science* **114** 1784-92
- [14] Todo M, Park S D, Takayama T and Arakawa K 2007 Fracture micromechanisms of bioabsorbable PLLA/PCL polymer blends *Engineering Fracture Mechanics* **74** 1872-83
- [15] Ostafinska A, Fortelný I, Hodan J, Krejčíková S, Nevoralová M, Kredatusová J, Kruliš Z, Kotek J and Šlouf M 2017 Strong synergistic effects in PLA/PCL blends: Impact of PLA matrix viscosity *Journal of the Mechanical Behavior of Biomedical Materials* **69** 229-41
- [16] Pivsa-Art W, Fujii K, Nomura K, Aso Y, Ohara H and Yamane H 2016 Isothermal crystallization kinetics of talc-filled poly(lactic acid) and poly(butylene succinate) blends *Journal of Polymer Research* **23** 144
- [17] Auras R, Lim L-T, Selk S E M and Tsuji H 2010 *POLY(LACTIC ACID) SYNTHESIS, STRUCTURES, PROPERTIES, PROCESSING, AND APPLICATION* (New Jersey: John Wiley & Sons, Inc)
- [18] Anderson K S, Schreck K M and Hillmyer M A 2008 Toughening Polylactide *Polymer Reviews* **48** 85-108
- [19] Yokohara T and Yamaguchi M 2008 Structure and properties for biomass-based polyester blends of PLA and PBS *European Polymer Journal* **44** 677-85
- [20] Yokohara T, Okamoto K and Yamaguchi M 2010 Effect of the shape of dispersed particles on the thermal and mechanical properties of biomass polymer blends composed of poly(L-lactide) and poly(butylene succinate) *Journal of Applied Polymer Science* **117** 2226-32
- [21] Wu D, Yuan L, Laredo E, Zhang M and Zhou W 2012 Interfacial Properties, Viscoelasticity, and Thermal Behaviors of Poly(butylene succinate)/Polylactide Blend *Industrial & Engineering Chemistry Research* **51** 2290-8
- [22] Shibata M, Inoue Y and Miyoshi M 2006 Mechanical properties, morphology, and crystallization behavior of blends of poly(L-lactide) with poly(butylene succinate-co-L-lactate) and poly(butylene succinate) *Polymer* **47** 3557-64
- [23] Deng Y and Thomas N L 2015 Blending poly(butylene succinate) with poly(lactic acid): Ductility and phase inversion effects *European Polymer Journal* **71** 534-46
- [24] Wu D, Zhang Y, Yuan L, Zhang M and Zhou W 2010 Viscoelastic interfacial properties of compatibilized poly(ε-caprolactone)/polylactide blend *Journal of Polymer Science, Part B: Polymer Physics* **48** 756-65
- [25] Zhao H, Yan X, Zhao G and Guo Z 2016 Microcellular injection molded polylactic acid/poly(ε-caprolactone) blends with supercritical CO₂: Correlation between rheological properties and their foaming behavior *Polymer Engineering and Science* **56** 939-46
- [26] Wang R, Wang S, Zhang Y, Wan C and Ma P 2009 Toughening modification of PLLA/PBS blends via in situ compatibilization *Polymer Engineering & Science* **49** 26-33
- [27] Zhao H and Zhao G 2016 Mechanical and thermal properties of conventional and microcellular injection molded poly(lactic acid)/poly(ε-caprolactone) blends *Journal of the Mechanical Behavior of Biomedical Materials* **53** 59-67
- [28] Yang J-M, Chen H-L, You J-W and Hwang J C 1997 Miscibility and Crystallization of Poly(L-lactide)/Poly(ethylene glycol) and Poly(L-lactide)/Poly(ε-caprolactone) Blends *Polym J* **29** 657-62
- [29] Zolali A M and Favis B D 2017 Partial to complete wetting transitions in immiscible ternary blends with PLA: the influence of interfacial confinement *Soft Matter* **13** 2844-56
- [30] Nagarajan V, Mohanty A K and Misra M 2016 Perspective on Polylactic Acid (PLA) based Sustainable Materials for Durable Applications: Focus on Toughness and Heat Resistance *ACS Sustainable Chemistry and Engineering* **4** 2899-916