

# Toward a Romanian version of the Three Factor Eating Questionnaire–R21 for children and adolescents (CTFEQr21): Preliminary psychometric analysis and relation with body composition

5 Steff M (PhD)<sup>a</sup>, Verney J (PhD)<sup>b</sup>, Marinau M (PhD)<sup>a</sup>, Perte S (Msc)<sup>a</sup>, Pereira B (PhD)<sup>c</sup>, Bryant E (PhD)<sup>d</sup>,  
Drapeau V (PhD)<sup>e</sup>, Chaput JP (PhD)<sup>f</sup>, Courteix D (PhD)<sup>b</sup>, Thivel D (PhD)<sup>b</sup>

<sup>a</sup>University of Oradea, Faculty of Geography, Tourism and Sports, Research Centre on Human Performance

10 <sup>b</sup>Clermont Auvergne University, EA 3533, Laboratory of the Metabolic Adaptations to Exercise under Physiological and Pathological Conditions (AME2P), CRNH-Auvergne, Clermont-Ferrand, France.

<sup>c</sup>Clermont-Ferrand University Hospital, Biostatistics Unit (DRCI), Clermont-Ferrand, France.

<sup>d</sup>Division of Psychology, Faculty of Social Sciences, University of Bradford, Great Horton Road, Bradford, West Yorkshire, BD7 1DP, UK.

<sup>e</sup>Department of Physical Education, Faculty of Education, Université Laval, Québec City, QC, Canada.

15 <sup>f</sup>Healthy Active Living and Obesity Research Group, Children's Hospital of Eastern Ontario Research Institute, Ottawa, Ontario, Canada.

**Figures: 1**

20 **Tables: 3**

**Appendices: 1**

**Conflict of interest:** The authors have conflict of interest to declare

25 **Acknowledgements:** The authors want to thank all the participants and the educators who helped collecting data.

30

## Abstract

35 **Purpose.** The aim of this study was to develop and validate a Romanian version of the three factor eating questionnaire-r21 for children and adolescents (ctfeqr21), and to assess its psychometric properties and factor structure. Associations between this version of the ctfeqr21 and anthropometric measures as well as body composition were also examined.

40 **Design and methods.** 153 children and adolescents (68 boys and 95 girls;  $10.8 \pm 3.5$  years) took part in this study (bmi of  $17.7 \pm 3.1$  kg/m<sup>2</sup>). The participants were first interviewed to ascertain their understanding of the ctfeq-r21 and were then asked to self-complete the questionnaire. Height and weight were measured and body composition assessed using bio impedance analyzers (Tanita MC 780).

45 **Results.** The CTFEQr21 showed satisfactory internal consistency (cronbach's  $\alpha=0.78$ ). Cronbach's alpha coefficients were 0.55 for CR, 0.75 for UE, and 0.76 for EE separately. UE and EE were found to be significantly correlated ( $r=0.54$ ,  $p<0.05$ ). The three factors explained 43% of the total variance. Correlation between CR, UE and EE with body weight, BMI and FFM were significant but low to moderate with coefficients ranging from 0.20 to 0.37. The higher the CR, UE and EE tertiles, the higher the weight, fat mass (kg) and fat-free mass values.

50 **Conclusions.** According to the psychometric analysis of the questionnaire, the proposed version of the CTFEQr21 proposed here is a satisfactory tool to assess eating behaviors in Romanian child population that remains to be further developed.

**KEY WORDS.** Children; Eating behaviours; Obesity; Psychometric properties; Validation

55

60

65

## Introduction

The continuous worldwide progression of overweight and obesity in pediatric populations is becoming one of the most critical global public health concerns [1, 2]. While most westernized countries have been working on public health strategies aimed at promoting a healthy lifestyle, developing countries are currently facing the alarming progression of physical inactivity, sedentary behaviors and unhealthy eating behaviors. The World Health Organization (WHO) and the European Childhood Obesity Surveillance Initiative (ECOSI) reported in 2013 an overweight/obesity prevalence of 26.8% (11.6% for obesity) in 8-year-old children from Romania (based on the WHO reference curves)[3], which placed Romania among the worst countries in the world in term of excess weight [4]. More recently, Emandi and collaborators reported that almost one in four Romanian children aged 6–19 years, were overweight or obese between 2006 and 2015 [5].

Although valid universal tools are available to objectively and properly measure physical activity (e.g., accelerometers), valid methods to assess the cognitive and behavioral dimensions of eating behaviors, as well as attitudes towards food, remain to be developed in Romania. The Three Factor Eating Questionnaire (TFEQ) [6] has been specifically developed to assess individuals' eating behaviors, and its accuracy has been shown in different populations [7-10]. Recently, a short form of the TFEQ composed of 21 items (TFEQ-R21) has been developed to measure the cognitive, behavioral and emotional dimensions of eating behaviors [10-12]. These three factors refer to “Cognitive Restraint” (CR), i.e. conscious effort to control what an individual ingests in order to maintain or decrease body weight, “Uncontrolled Eating” (UE), i.e. a tendency to over-consume food in response to the loss of control over the food itself; and “Emotional Eating” (EE), i.e. the need to overeat when individuals do not manage to cope with emotionally negative events and mood. This shorter TFEQ form has been widely used among adults [11, 13-15] with a growing interest in children and adolescents [9, 10].

Some studies have been interested in the relationship between weight status or body composition with eating behaviors in children and adolescents [6, 9-12, 16, 17]. Using the original 51-item version of the TFEQ, it has been shown that cognitive or restrained eating was positively associated with children and adolescents' body mass index (BMI) and body mass [6, 18]; however, the relationships between adiposity and emotional or external/uncontrolled eating are unclear [19]. Recently, Bryant et al. developed and validated a pediatric version of the TFEQ (CTFEQr17), showing that CR was associated with a higher body weight, BMI and BMI percentile and that high UE and EE scores were related to a preference for high fat savoury and high fat sweet foods in 12 year-old children and adolescents [9]. Martin-Garcia and collaborators also found that CR was strongly and positively related to body composition in Spanish children and adolescents using an adapted Spanish version of the TFEQ-R based on 21 items (TFEQ-R21) [10].

## 105 **Aim**

While there is a growing interest for the prevention and treatment of pediatric overweight and obesity in Romania, there is also a need for adapted and validated tools to properly assess children and adolescents' eating behaviors. The purpose of the present study was to validate a Romanian version of the TFEQ for children and adolescents and to analyze its psychometric properties and factor structure. A second aim was to explore the relationships between Romanian children and adolescents' eating behaviors and their body composition.

## **Methods**

### ***Study Population***

A total of 153 children and adolescents (68 boys and 95 girls) took part in this study, with a mean age of  $10.8 \pm 3.5$  years (age ranged from 6 to 16 years) and a mean BMI of  $17.7 \pm 3.1$  kg/m<sup>2</sup>. To be included in the study, children and adolescents had to be free of any history of psychological or eating disorders. None of the children and adolescents was following a diet, nor were they taking any

medication that could interfere with the results. The participants were recruited among primary and secondary schools in Oradea, Romania. Both the participants and their legal representatives received information sheets and signed consent forms. This study was conducted in accordance with the Declaration of Helsinki of 1975 regarding the ethical principles for human research and after consideration by the appropriate local authorities (University of Oradea ethical commission).

### **Validation Process of the TFEQ-R21C**

The Romanian version of the CTFEQr21 (see Appendix 1) was obtained after the following process (as described by [10]: i) translation and back translation procedure by two independent Romanian native speakers fluent in English of the CTFEQ [9]; ii) back translation review and harmonization between the new translation and the source version; and iii) review of the translation by an expert in pediatric nutrition and adaptation of the vocabulary when necessary. The final version of the questionnaire was composed of the same number of items (21 questions), the 4-point response scale for answering from questions 1 to 20, and an 8-point response scale for the item 21. The codification and treatment proposed by Cappelleri et al. & Bryant et al. to obtain the three factors (UE, CR, and EE) were also retained [9, 11].

**Appendix 1.** The Romanian version of the 21-item Three Factor Eating Questionnaire for children and adolescents (TFEQ-R21C).

- 
- |    |   |
|----|---|
| 1. | Mănânc porții mici la masă pentru a mă ajuta să-mi controlez greutatea<br>(1) În totalitate de acord / (2) Probabil adevărat / (3) Probabil fals / (4) În totalitate fals                         |
| 2. | Încep să mănânc atunci când mă simt îngrijorat/ă.<br>(1) În totalitate de acord / (2) Probabil adevărat / (3) Probabil fals / (4) În totalitate fals  |
| 3. | Uneori, când încep să mănânc mi se pare că nu mă pot opri.<br>(1) În totalitate de acord / (2) Probabil adevărat / (3) Probabil fals / (4) În totalitate fals                                     |
| 4. | Când mă simt trist/ă, de obicei mănânc mult.<br>(1) În totalitate de acord / (2) Probabil adevărat / (3) Probabil fals / (4) În totalitate fals   |
| 5. | Nu mănânc anumite tipuri de mâncare pentru că pot să mă îngraș.<br>(1) În totalitate de acord / (2) Probabil adevărat / (3) Probabil fals / (4) În totalitate fals                                |
| 6. | Când sunt lângă cineva care mănâncă, și mie îmi vine poftă de mâncare.<br>(1) În totalitate de acord / (2) Probabil adevărat / (3) Probabil fals / (4) În totalitate fals                         |
| 7. | Când sunt nervos simt nevoia să mănânc.<br>(1) În totalitate de acord / (2) Probabil adevărat / (3) Probabil fals / (4) În totalitate fals  |
| 8. | De obicei îmi este atât de foame încât simt că aș putea să mănânc mult fără să mă simt plin/ă.<br>(1) În totalitate de acord / (2) Probabil adevărat / (3) Probabil fals / (4) În totalitate fals |

9. Când îmi este foame simt că trebuie să mânânc tot ce am în farfurie fără să mă opresc  
(1) În totalitate de acord / (2) Probabil adevărat / (3) Probabil fals / (4) În totalitate fals
- 155 10. Când mă simt singur/ă, mă consolez mâncând.  
(1) În totalitate de acord / (2) Probabil adevărat / (3) Probabil fals / (4) În totalitate fals
11. În timpul meselor, motivul pentru care mânânc mai puțin este pentru a nu mă îngrăsa.  
(1) În totalitate de acord / (2) Probabil adevărat / (3) Probabil fals / (4) În totalitate fals
12. Atunci când văd sau simt alimentul meu preferat, nu pot să nu îl mânânc chiar dacă sunt satul/ă.  
(1) În totalitate de acord / (2) Probabil adevărat / (3) Probabil fals / (4) În totalitate fals
- 160 13. Întotdeauna mi-e destul de foame pentru a mânca la orice oră.  
(1) În totalitate de acord / (2) Probabil adevărat / (3) Probabil fals / (4) În totalitate fals
14. Dacă mă simt nervos/nervoasă, încerc să mă calmez mâncând.  
(1) În totalitate de acord / (2) Probabil adevărat / (3) Probabil fals / (4) În totalitate fals
- 165 15. Când văd ceva ce pare delicios, adesea mi se face foame și îmi vine să-l mânânc pe moment.  
(1) În totalitate de acord / (2) Probabil adevărat / (3) Probabil fals / (4) În totalitate fals
16. Când mă simt cu adevărat furios/furioasă, vreau să mânânc.  
(1) În totalitate de acord / (2) Probabil adevărat / (3) Probabil fals / (4) În totalitate fals
17. De câte ori eviți să mânânci sau să cumperi alimentele preferate ?  
(1) Aproape niciodată / (2) Câteodată / (3) De obicei / (4) Aproape tot timpul
- 170 18. De câte ori mânânci mai puțin decât ai vrut la o masă?  
(1) Aproape niciodată / (2) Câteodată / (3) De obicei / (4) Aproape tot timpul
19. Ți se întâmplă să mânânci mult chiar dacă nu îți este foame?  
(1) Niciodată / (2) Nu foarte des / (3) Câteodată / (4) Cel puțin odată pe săptămână
- 175 20. Cât de des îți este foame?  
(1) Numai înainte de masă / (2) Uneori între mese / (3) De multe ori între mese / (4) Aproape tot timpul
21. Ce tip de mîncăcios ești pe o scară de 1 la 8? Unde 1 semnifică : „Mânânc numai ce vreau și când vreau” și 8 semnifică : „Sunt atent la ce mânânc pentru a-mi controla greutatea”. 1 2 3 4 5 6 7 8
- 

180

### **Experimental Design**

The children and adolescents enrolled in the study were asked to join the university facilities where they received verbal and written instructions on how to properly complete the questionnaire. They answered the questions by themselves and a member of the investigation team was present to help them when necessary, especially the youngest participants. The questionnaire took about 10 to 15 minutes to complete. Anthropometric and body composition measurements were also taken using standardized procedures.

### **Anthropometric and Body Composition Measurements**

A digital scale was used to measure body mass to the nearest 0.1 kg, and standing height was assessed barefoot, to the nearest 0.1 cm by using a wall-mounted stadiometer. BMI was calculated as body mass (kg) divided by height squared (m<sup>2</sup>). Body composition was assessed by bioelectrical impedance using Tanita MC-780 multi-frequency, segmental body composition analyzer. This consisted of a stand-alone unit which the participant had to step on, barefoot (standard mode).

Information about the participant (age, sex, and height) was entered by the experimenter. Once  
195 body mass had been assessed by the Tanita scale, the participant had to take grips in both hands  
(alongside his/her body) during the impedance measure (hand to foot). A full segmental analysis was  
performed in less than 20 s. Segmental fat mass and fat-free mass values were indicated at the end  
of the analysis on the digital screen (trunk, left and right arms and legs); as well as total body fat, fat-  
free mass and water. This newly developed technology has been recently validated in adults of  
200 various physical activity levels [20] and children of various adiposity levels [21], showing a good level  
of validity.

### **Statistical Analysis**

All statistical analyses were performed using Stata software (Version 13, StataCorp, College Station,  
US) and the level of significance set at  $p < 0.05$ . Analyses performed in this study were those usually  
205 used in studies aimed at validating scales. In addition to descriptive statistics, the following  
psychometric properties of the questionnaire were explored. *Acceptability*: Data quality was  
considered satisfactory if more than 95% of the scale data were fully computable. Score range,  
closeness of mean to median, floor and ceiling effects (accepted maximum for both: 15%), and  
skewness of score distributions (limits: -1 to +1) were also analyzed. An *exploratory factor analysis*  
210 (principal components analysis method with varimax rotation) was carried out to determine the scale  
structure. The number of factors was chosen according to usual recommendations: Kaiser criteria,  
plot of eigenvalues and part of variance expressed by principal components. The Kaiser-Meyer-Olkin  
test for sample adequacy was applied. *Internal consistency* was determined through Cronbach's  
alpha coefficient (minimum accepted value: 0.70); the item homogeneity coefficient (criterion value:  
215  $\geq 0.30$ ), and the item-total correlation corrected for overlap (criterion value:  $\geq 0.30$ ). *Internal validity*  
was determined by correlation coefficients between the domains composing the scale (standard,  $\rho =$   
0.30–0.70). Regarding convergent validity, a high association (Spearman rank correlation coefficient,  
 $\rho > 0.50$ ) was hypothesized between the scale scores and other quantitative measures (weight, BMI,

fat-free mass and fat mass). Then, each dimension of scale score was categorized in 3 modalities  
220 according to statistical distribution (< first quartile, first-third quartile, > third quartile; respectively  
named Tertile 1, tertile 2 and Tertile 3 in the result section). The comparisons between groups for  
weight, BMI, fat-free mass and fat mass were performed by ANOVA or non-parametric Kruskal-Wallis  
test, followed by a post-hoc test for multiple comparisons (Tukey-Kramer post ANOVA and Dunn  
after the Kruskal-Wallis test). Relationships between quantitative variables were assessed using  
225 correlation coefficients and were represented graphically with a color-coded heatmap. Since we  
missed to observe any gender differences the data have been analyzed together and all the analyses  
have been where adjusted for age and gender.

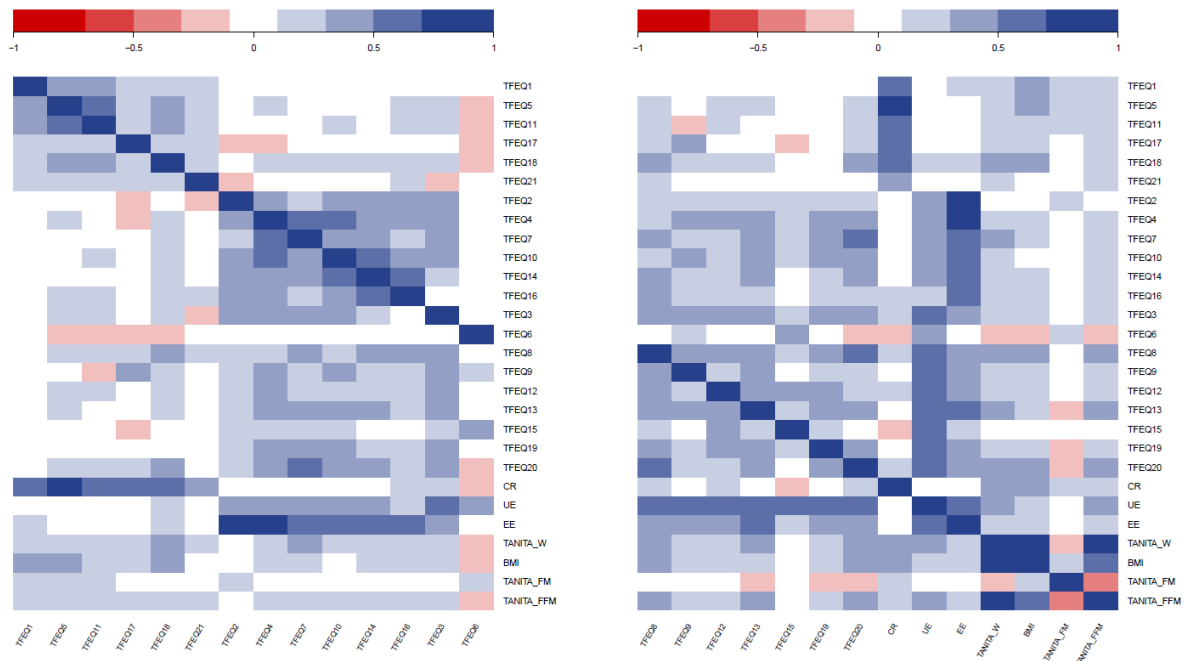
## Results

### 230 *Internal Consistency Analysis*

In this study, the Cronbach's alpha coefficient for the whole questionnaire was 0.78. When analyzed  
separately, the Cronbach's alpha coefficients were 0.55 for CR, 0.75 for UE, and 0.76 for EE. Only the  
correlation between UE and EE was found to be statistically significant with a correlation coefficient  
of 0.54 ( $p < 0.001$ ). For the relation between CR and the other eating behaviors, the correlation  
235 coefficients were low (0.07 and 0.08 for UE and EE, respectively).

As illustrated in the color-coded heatmap, correlations between items assigned to a determined  
scale were moderate and correlations with items of the other two scales remained low even if the  
relationships between UE and EE items were stronger (the correlation coefficients range scale is  
detailed on the heatmap figure) (Figure 1).





240

**Figure 1.** Heatmap representation of the correlations between items of the CTFEQ, between each items and each dimensions (EE, CR, UE) and between each items and dimensions, and anthropometric and body composition variables. The darkest is the box and the higher is the correlation. CR: Controlled eating; EE: Emotional Eating; UE: Uncontrolled eating; Tanita\_W: body weight; BMI: Body Mass Index; Tanita FM: Fat Mass (%); Tanita\_FFM: Fat Free Mass (kg).

245

250

These results were confirmed by an exploratory factor analysis. According to the maximum likelihood analysis with Varimax rotation performed, the original structure of the CTFEQr21 appears to be replicated in this study. The principal components analysis identified three factors with an eigenvalue above 1. These three factors explained 43% of the total variance (Table 1). The factor analysis highlighted that each item loaded positively to one of the three factors that corresponded to the same factors of the original questionnaire (CTFEQr21). The Kaiser-Meyer-Olkin index was 0.75.

**Table 1.** Factor loading of the CTFEQ-R21 items and communalities.

Item	Item content	Uncontrolled eating	Emotional eating	Cognitive restraint
13	I'm always hungry enough to eat at any time.	0.31		
3	Sometimes when I start eating, I just can't seem to stop.	0.28		
15	When I see something that looks very delicious, I often get so hungry that I have to eat right away.	0.15		
8	I often get so hungry that my stomach feels like a bottomless pit.	0.31		
6	Being with someone who is eating, often makes me want to also eat.	0.05		
20	How often do you feel hungry?	0.31		
9	I'm always so hungry that it's hard for me to stop eating before finishing all of the food on my plate.	0.22		
12	When I smell a sizzling steak or see a juicy piece of meat, I find it very difficult to keep from eating even if I've just	0.25		

	finished a meal.			
19	Do you go on eating binges even though you're not hungry?	0.24		
16	When I feel depressed, I want to eat.		-0.48	
2	I start to eat when I feel anxious.		-0.26	
10	When I feel lonely, I console myself by eating.		-0.20	
4	When I feel sad, I often eat too much.		-0.26	
14	If I feel nervous, I try to calm down by eating.		-0.37	
7	When I feel tense, I often feel I need to eat.		-0.08	
11	I hold back on how much I eat at meals on purpose to keep from gaining weight.			0.49
1	I take small portions on purpose to control my weight.			0.37
5	I don't eat some foods because they make me fat.			0.49
21	On a scale from 1 to 8, where 1 means no restraint in eating (eating whatever you want, whenever you want it) and 8 means total restraint (constantly limiting food intake and never "giving in"), what number would you give yourself?			0.28
17	When do you avoid "stocking up" on tempting foods?			0.17
18	How likely are you to make an effort to eat less than you want?			0.41
<b>Explained variance</b>		23.39	7.97	11.41
<b>Accumulated variance</b>		23.39	42.77	34.80

## 255 **Convergent Validity - Relationships between TFEQ-R21C and Body Composition**

First, correlation coefficients were calculated between CTFEQr21 dimensions and parameters related to body composition. Values of coefficients for body weight, BMI and FFM were low to moderate (ranged from 0.20 to 0.37) despite significant p-values (Table 1). No significant correlations were found between each CTFEQr21 dimension and fat mass, but were for body weight, BMI and FFM (see Table 2).

**Table 2.** Correlations between the three eating behaviors from the TFEQ-R21C and body composition indicators.

	Body Weight (kg)	BMI (kg/m <sup>2</sup> )	Fat Mass (%)	FFM (kg)
<b>Cognitive restraint</b>	0.34*	0.38*	0.14	0.29*
<b>Uncontrolled eating</b>	0.37*	0.31*	-0.08	0.34*
<b>Emotional eating</b>	0.21*	0.20*	0.04	0.21*

BMI: Body Mass index; FFM: Fat-Free Mass; \*p<0.05

265 These results were confirmed by testing comparisons between body composition indicators by tertile of eating behavior scores (Table 3). No association was found between fat mass (%) and the three eating behaviors. However, the higher the CTFEQr21 factor tertile, the higher the weight, fat mass (kg) and fat-free mass values.

270

**Table 3.** Mean body composition values of participants stratified by tertile of eating behavior.

Cognitive Restraint	Tertile 1 (Low)		Tertile 2 (Intermediate)		Tertile 3 (High)		ANOVA
	Mean	SD	Mean	SD	Mean	SD	
Body Weight (kg)	37.8	17.3	38.9	15.6	51.6	17.8	** T3>T1/T2 **
FM (kg)	8.1	9.5	7.8	3.7	11.3	5.3	*** T3>T1/T2 **
FM (%)	19.3	4.7	20.2	5.1	22.0	6.3	NS
FFM (kg)	29.5	14.6	29.5	12.1	38.2	13.5	* T3>T1/T2 *

Uncontrolled Eating	Tertile 1 (Low)		Tertile 2 (Intermediate)		Tertile 3 (High)		ANOVA
	Mean	SD	Mean	SD	Mean	SD	
Body Weight (kg)	34.3	12.7	38.9	17.1	51.4	17.8	*** T3>T1/T2 **
FM (kg)	9.1	11.5	7.9	4.2	9.9	4.6	** T2<T1/T3 **
FM (%)	21.1	5.5	20.7	4.8	19.7	6.1	NS
FFM (kg)	26.6	11.3	29.4	13.2	36.7	13.8	*** T3>T1/T2*** / T1<T2*

Emotional Eating	Tertile 1 (Low)		Tertile 2 (Intermediate)		Tertile 3 (High)		ANOVA
	Mean	SD	Mean	SD	Mean	SD	
Body Weight (kg)	37.5	16.3	48.8	20.2	45.7	15.9	** T1<T2/T3 **
FM (kg)	8.4	8.3	9.1	4.8	9.7	4.4	* T1<T3*
FM (%)	20.5	4.7	19.3	6.5	21.2	5.5	NS
FFM (kg)	28.7	13.1	36.8	15.8	34.2	12.3	** T1<T2/T3**

BMI: Body Mass Index; FM: Fat Mass; FFM: Fat-Free Mass; SD: Standard Deviation; ANOVA: Analysis of Variance; T1: Tertile 1; T2: Tertile 2; T3: Tertile 3. \*p<0.05; \*\*p<0.01; \*\*\*p<0.001.

275

## Discussion

This study aimed to test the psychometric properties of a Romanian version of the TFEQ-R21 to assess eating behaviors in children and adolescents (CTFEQr21). This Romanian version of the CTFEQr21 provides a satisfactory assessment of children and adolescents' eating behaviors with an internal-consistency Cronbach's alpha coefficient of 0.78. When analyzed separately, CR, EE and UE showed coefficients of 0.55, 0.76 and 0.75, respectively.

These results are in line with those of Bryant et al. who proposed the adapted version of the TFEQ for children and adolescents showing an internal consistency coefficient of 0.81 [9]. In their study, 285 Martin-Garcia and collaborators proposed a Spanish version of this CTFEQr21 among 8 to 17 years old youth and also found a Cronbach's alpha coefficient of 0.73 [10]. As in the present work, both the English [9] and Spanish versions [10] of this CTFEQr21 found lower internal consistency for the CR dimension compared with UE and EE. As illustrated by the Heatmap model, results showed moderate inter-items correlations, which also supports available literature [9, 10]. While both the English and 290 Spanish versions of the questionnaire found significant correlations between UE and both EE and CR [9, 10], results observed in the present study only showed a significant correlation between UE and EE, with CR showing only low correlations with UE and EE. In the present study, the three factors explained 43% of the total variance, although this remains moderate compare to the 51.6% of variance observed in the English version of the CTFEQ-R21 [9], yet it is better than the 34.4% of the 295 variance obtained in the study from Martin-Garcia et al.[10].

This Romanian version of the CTFEQr21 showed moderate correlations between each dimension of the questionnaire (CR, UE, EE) and body weight, BMI and FFM. However, fat mass was not correlated with CR, UE, or EE. Although Bryant and colleagues also observed significant positive correlations between CR and body weight and BMI (particularly in girls) in a similar population, UE and EE were 300 not related to anthropometric measures in their work [9]. Previously published studies also found significant correlations between CR and anthropometric values [7, 8, 10]. The present results are also in line with other evidence showing significant correlations between body weight/BMI and EE [22], UE [10, 23] or both [24, 25].

In the present study, we also divided data according to tertiles of CTFEQr21 eating behavior traits 305 that discriminate children and adolescents showing the lowest, intermediate and highest values for each three dimensions. Accordingly, higher body weight, BMI, fat-free mass and fat mass (kg only) were observed with higher tertiles of eating behaviors. In their work, Martin-Garcia et al. also

analyzed their results according to tertiles and found similar results for CR only [10]. According to the later study, children and adolescents in the lower UE tertile showed a significantly higher body weight with no difference for BMI and total fat mass. However, they did not find any difference between anthropometric and body composition measures between tertiles of EE scores [10]. Such divergent results could be explained by the higher heterogeneity of their sample in terms of weight status with a large majority of overweight/obese participants (51 overweight, 83 obese and 54 lean) [10].

Although this work is the first to propose a version of the CTFEQ21 for Romanian children, its results must be interpreted in lights of some limitations. First, the composing of our sample must be considered. The present sample is mainly composed of normal weight children and adolescents and further investigations should be conducted among overweight and obese ones. Moreover the sample presents a quite large age range which has to be considered when interpreting our results. The unequal proportion of boys and girls is certainly one of the main limitations of our sample. Indeed, we did not observe gender differences during our analysis, which is certainly due to this disproportionate number of boys and girls. This is of particular importance since the literature clearly points out differences between boys and girls when it comes to eating behaviors, with girls usually showing significantly higher average results in each of such scale dimensions. Although, even though our analyses were controlled for age and sex, it would have been more precise to also evaluate the participants' biological maturation using Tanner stages. The use of an impedance analyzer to assess body composition might also be considered as a limitation since more accurate methods such as Dual-Energy X-ray absorptiometry (DXA) could be used as in Martin-Garcia et al. study [10]. However, the Tanita MC780 BIA analyzer used in the present study has been shown to provide accurate measurements of body composition in children and adolescents [21].

## **Conclusion**

The proposed Romanian version of the CTFEQ-R21 for children and adolescents shows a satisfactory psychometric properties and internal consistency, with anthropometric values, as well as FM and FFM, being correlated with the three eating behavior traits that compose the whole questionnaire.

335 According to the present results, this first version of the Romanian CTFEQ-R21 proposes an interesting tool that needs to be further developed and improved. Further studies enrolling a larger sample should be conducted to specifically question the validity of this questionnaire among overweight and obese Romanian children and adolescents. Other international tools used to assess eating behaviors should be validated in developing countries that are today facing the progression of

340 pediatric obesity which require effective public health strategies.

## References

1. Wicklow BA, Becker A, Chateau D, Palmer K, Kozyrskij A, Sellers EA: **Comparison of anthropometric measurements in children to predict metabolic syndrome in adolescence: analysis of prospective cohort data.** *Int J Obes (Lond)* 2015, **39**(7):1070-1078.
2. Thivel D, Malina RM, Isacco L, Aucouturier J, Meyer M, Duche P: **Metabolic syndrome in obese children and adolescents: dichotomous or continuous?** *Metab Syndr Relat Disord* 2009, **7**(6):549-555.
3. Nicolescu R: **Evaluarea morbidității cronice prin dispensarizare în colectivitățile de copii și tineri – raport național 2013 – COSI.** In.; 2013.
4. Wijnhoven TM, van Raaij JM, Spinelli A, Starc G, Hassapidou M, Spiroski I, Rutter H, Martos E, Rito AI, Hovengen R *et al*: **WHO European Childhood Obesity Surveillance Initiative: body mass index and level of overweight among 6-9-year-old children from school year 2007/2008 to school year 2009/2010.** *BMC Public Health* 2014, **14**:806.
5. Chirita-Emandi A, Barbu CG, Cinteza EE, Chesaru BI, Gafencu M, Mocanu V, Pascanu IM, Tatar SA, Balgradean M, Dobre M *et al*: **Overweight and Underweight Prevalence Trends in Children from Romania - Pooled Analysis of Cross-Sectional Studies between 2006 and 2015.** *Obes Facts* 2016, **9**(3):206-220.
6. Stunkard AJ, Messick S: **The three-factor eating questionnaire to measure dietary restraint, disinhibition and hunger.** *J Psychosom Res* 1985, **29**(1):71-83.
7. van Strien T, Herman CP, Verheijden MW: **Eating style, overeating and weight gain. A prospective 2-year follow-up study in a representative Dutch sample.** *Appetite* 2012, **59**(3):782-789.
8. Snoek HM, Engels RC, van Strien T, Otten R: **Emotional, external and restrained eating behaviour and BMI trajectories in adolescence.** *Appetite* 2013, **67**:81-87.
9. Bryant EJ, Thivel D, Chaput JP, Drapeau V, Blundell JE, King NA: **Development and validation of the Child Three-Factor Eating Questionnaire (CTFEQr17).** *Public Health Nutr* 2018:1-10.
10. Martin-Garcia M, Vila-Maldonado S, Rodriguez-Gomez I, Faya FM, Plaza-Carmona M, Pastor-Vicedo JC, Ara I: **The Spanish version of the Three Factor Eating Questionnaire-R21 for**

- 370 **children and adolescents (TFEQ-R21C): Psychometric analysis and relationships with body composition and fitness variables.** *Physiol Behav* 2016, **165**:350-357.
11. Cappelleri JC, Bushmakin AG, Gerber RA, Leidy NK, Sexton CC, Lowe MR, Karlsson J: **Psychometric analysis of the Three-Factor Eating Questionnaire-R21: results from a large diverse sample of obese and non-obese participants.** *Int J Obes (Lond)* 2009, **33**(6):611-620.
- 375 12. Meyer JE, Pudel VE: **Experimental feeding in man: a behavioral approach to obesity.** *Psychosom Med* 1977, **39**(3):153-157.
13. Tholin S, Rasmussen F, Tynelius P, Karlsson J: **Genetic and environmental influences on eating behavior: the Swedish Young Male Twins Study.** *Am J Clin Nutr* 2005, **81**(3):564-569.
14. Danielsen KK, Svendsen M, Maehlum S, Sundgot-Borgen J: **Changes in body composition, cardiovascular disease risk factors, and eating behavior after an intensive lifestyle intervention with high volume of physical activity in severely obese subjects: a prospective clinical controlled trial.** *J Obes* 2013, **2013**:325464.
- 380 15. Jauregui-Lobera I, Garcia-Cruz P, Carbonero-Carreno R, Magallares A, Ruiz-Prieto I: **Psychometric properties of Spanish version of the Three-Factor Eating Questionnaire-R18 (Tfeq-Sp) and its relationship with some eating- and body image-related variables.** *Nutrients* 2014, **6**(12):5619-5635.
- 385 16. Bryant EJ, King NA, Blundell JE: **Disinhibition: its effects on appetite and weight regulation.** *Obes Rev* 2008, **9**(5):409-419.
17. Karlsson J, Persson LO, Sjostrom L, Sullivan M: **Psychometric properties and factor structure of the Three-Factor Eating Questionnaire (TFEQ) in obese men and women. Results from the Swedish Obese Subjects (SOS) study.** *Int J Obes Relat Metab Disord* 2000, **24**(12):1715-1725.
- 390 18. Karakuş S, Ş., Yıldırım H, Büyüköztürk Ş: **Adaptation of three factor eating questionnaire (TFEQ-R21) into Turkish culture: A validity and reliability study** *TAF Prevent Med Bull* 2016, **15**:229-237.
- 395 19. de Medeiros AC, Yamamoto ME, Pedrosa LF, Hutz CS: **The Brazilian version of the three-factor eating questionnaire-R21: psychometric evaluation and scoring pattern.** *Eat Weight Disord* 2017, **22**(1):169-175.
20. Verney J, Schwartz C, Amiche S, Pereira B, Thivel D: **Comparisons of a Multi-Frequency Bioelectrical Impedance Analysis to the Dual-Energy X-Ray Absorptiometry Scan in Healthy Young Adults Depending on their Physical Activity Level.** *J Hum Kinet* 2015, **47**:73-80.
- 400 21. Verney J, Metz L, Chaplais E, Cardenoux C, Pereira B, Thivel D: **Bioelectrical impedance is an accurate method to assess body composition in obese but not severely obese adolescents.** *Nutr Res* 2016, **36**(7):663-670.
- 405 22. Angle S, Engblom J, Eriksson T, Kautiainen S, Saha MT, Lindfors P, Lehtinen M, Rimpela A: **Three factor eating questionnaire-R18 as a measure of cognitive restraint, uncontrolled eating and emotional eating in a sample of young Finnish females.** *Int J Behav Nutr Phys Act* 2009, **6**:41.
23. de Lauzon B, Romon M, Deschamps V, Lafay L, Borys JM, Karlsson J, Ducimetiere P, Charles MA: **The Three-Factor Eating Questionnaire-R18 is able to distinguish among different eating patterns in a general population.** *J Nutr* 2004, **134**(9):2372-2380.
- 410 24. Konttinen H, Haukkala A, Sarlio-Lahteenkorva S, Silventoinen K, Jousilahti P: **Eating styles, self-control and obesity indicators. The moderating role of obesity status and dieting history on restrained eating.** *Appetite* 2009, **53**(1):131-134.
- 415 25. Greene GW, Schembre SM, White AA, Hoerr SL, Lohse B, Shoff S, Horacek T, Riebe D, Patterson J, Phillips BW *et al*: **Identifying clusters of college students at elevated health risk based on eating and exercise behaviors and psychosocial determinants of body weight.** *J Am Diet Assoc* 2011, **111**(3):394-400.

420 **Correspondence to:**






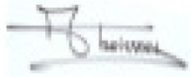


THIVEL David (PhD)  
 Clermont Auvergne University, EA 3533, Laboratory of the Metabolic Adaptations to Exercise under  
 Physiological and Pathological Conditions (AME2P), BP 80026, F-63171 Aubière cedex, France  
[David.Thivel@univ-bpclermont.fr](mailto:David.Thivel@univ-bpclermont.fr)

425 Phone and fax: 0033 4 73 40 76 79

**Authors' statement**

430 VJ, DC, BE, VD, JPC, TD designed the study; VJ, TD, DC, SM, MM, PS performed the data collection;  
 TD, MS, MM, BP analyzed the data. All the authors significantly contributed to the writing of the  
 paper. We altogether take the entire responsibility for the content of the paper. The content of this  
 paper has not been submitted or sent for publication anywhere else. The authors have not financial  
 conflict nor conflict of interest to disclose.

435

Steff M	
Verney J	
Marinau M	
Perte S	
Pereira B	
Bryant E	
Drapeau V	
Chaput JP	
Courteix D	
Thivel D	